

# leisure Trail UK

EVERYTHING FOR THE TRAIL, TRIALS,  
ENDURO & OFF-ROAD RIDER  
KTM, CRM & BETA TRIALS SPECIALISTS



**KTM 2011 EXC, SX & XC MODELS NOW IN STOCK**  
**WHY NOT CALL IN OR RING US FOR YOUR NEW KTM**  
ALL USED KTM's, CRM's & TRIALS BIKES etc PICTURED & DETAILED ON  
OUR REGULARLY UPDATED WEBSITE PLUS DETAILS OF ABOVE OFFERS  
LARGE CLOTHING & ACCESSORY DEPT WITH ALL THE TRIALS, TRAIL, ENDURO OR MX KIT YOU NEED



Full range of  
the New 2010  
Beta Evo Trials  
in stock

**GOOD MONEY PAID  
FOR NICE USED TRAIL,  
TRIALS & ENDURO  
BIKES £££**

ALL CRM  
250 PARTS  
STOCKED



OAKLEYS YARD, BEECH AVENUE, LONG EATON, NOTTINGHAM

# 0115 973 2466

Email: [sales@leisuretrail.co.uk](mailto:sales@leisuretrail.co.uk)

Check out our website: [www.leisuretrail.co.uk](http://www.leisuretrail.co.uk)

- HONDA CRM250 - FULL RANGE OF ACCESSORIES, SPARES & GOODIES IN STOCK, PHONE OR EMAIL FOR FULL LIST
- CRD PIPES & GUARDS IN STOCK
- FINANCE ARRANGED - QUOTES AVAILABLE ON REQUEST
- ALL MAJOR CREDIT & DEBIT CARDS ACCEPTED



[www.trailblazers-spain.com](http://www.trailblazers-spain.com)

## Off-Road Adventures

Southern Spain  
and Morocco

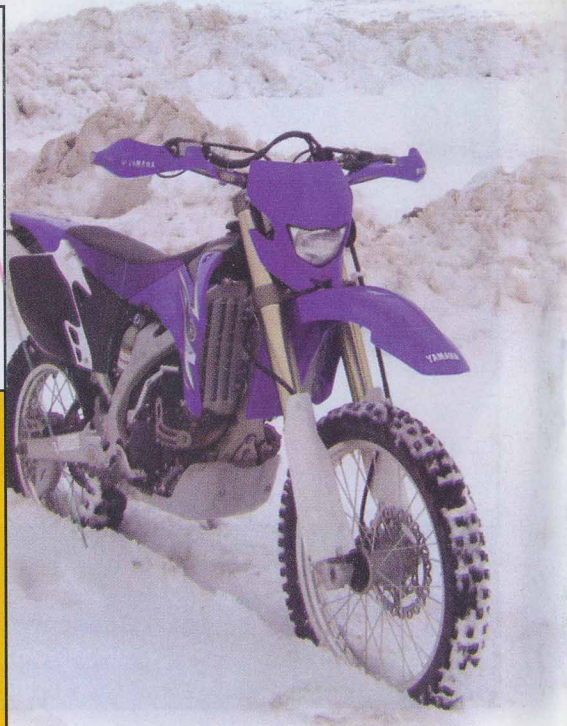
Day Rides, Weekends,  
Individuals, Groups  
Open 364 days

## NEW 2011 INDIA

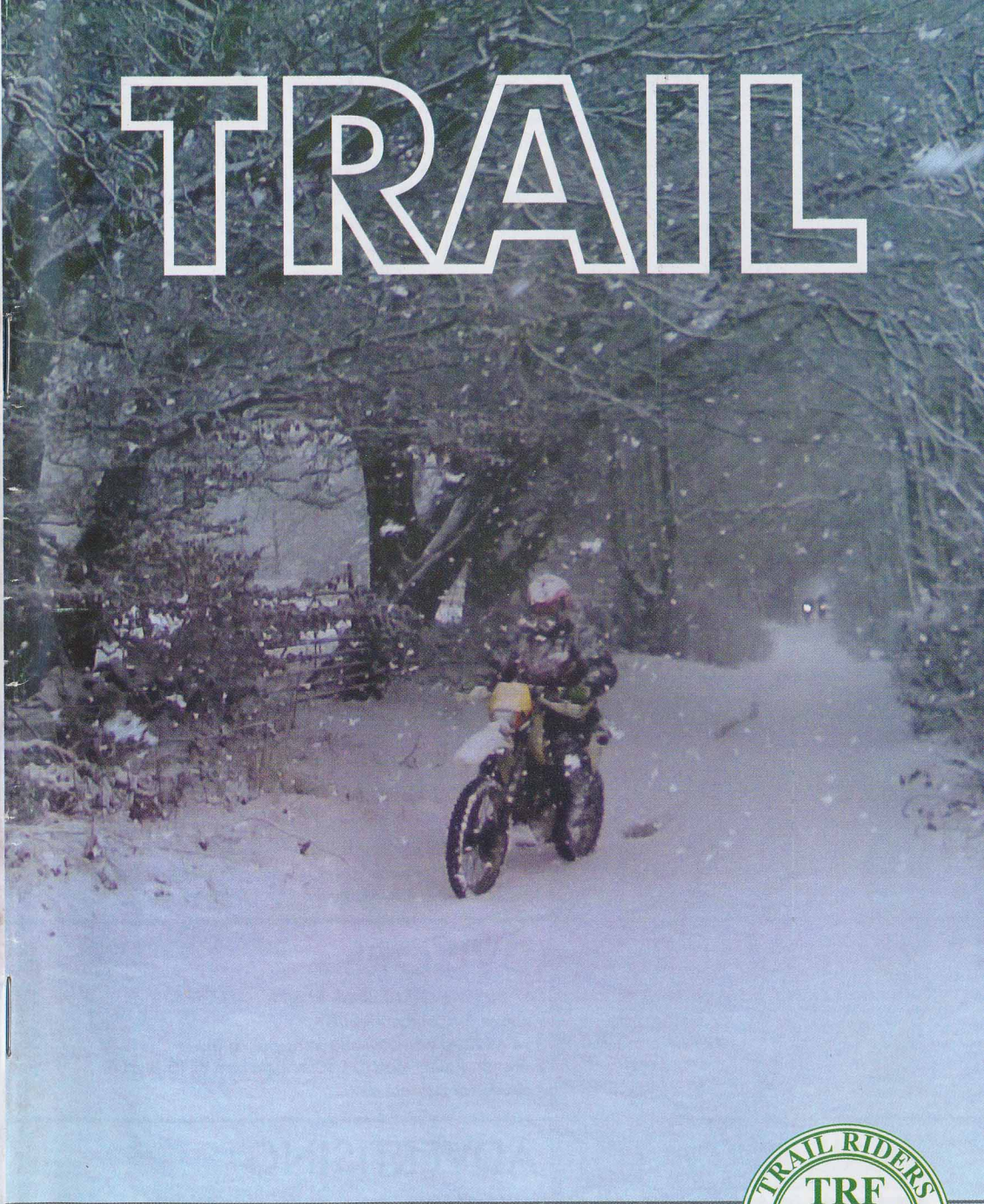
Himalayan Spiti Valley  
Enfield Motorcycle Safari

0845 869 6727

00 44 (0)20 8133 5526



# TRAIL



The magazine of the TRF, the National Club for all who  
wish to ride Legal Motorcycles on Legal Carriageways

FEBRUARY 2011 No. 390 EDITOR: FRED ELLISON



Patron: Lord Fairfax

## TRF OFFICERS & CONTACTS

Chairman:	<b>Andy Gerrard</b>	01525 717634/07803 600571 chairman@trf.org.uk 52 Conway Drive, Flitwick, Bedfordshire MK45 1ST
Membership Secretary:	<b>Debbie Hutchinson</b>	07966 438907 memsec@trf.org.uk Marcliff, Bakers Hill, Exeter, Devon EX2 9TE
Secretary:	<b>Polly Cody</b>	01525 717634 secretary@trf.org.uk 52 Conway Drive, Flitwick, Bedfordshire MK45 1ST
Treasurer (Acting):	<b>Arnold Brewer</b>	01865 741410 treasurer@trf.org.uk 2 London Road, Headington, Oxford OX3 7PA
Editor:	<b>Fred Ellison</b>	01254 823893 Fax: 01254 887999 editor@trf.org.uk Sheepcote Farm, Moor Lane, Wiswell, Clitheroe BB7 9DG
P.R.:	<b>Richard Simpson</b>	07812 402021 richardsimpson@blueyonder.co.uk
RoW Officer:	<b>Robin Hickin</b>	01926 817060/07890 550847 row@trf.org.uk 42 Model Village, Southam, Warwickshire CV47 9RB
I. T. & Website:	<b>Adrian Allen</b>	web@trf.org.uk
BMF Liaison:	<b>David Giles</b>	01332 552288 bmfliason@trf.org.uk 22 Ford Lane, Allestree, Derby DE22 2EW
LARA Rep:	<b>David Giles</b>	01332 552288 lararep@trf.org.uk 22 Ford Lane, Allestree, Derby DE22 2EW
CCPR Rep:	<b>Dave Tilbury</b>	023 80618937 ccprrep@trf.org.uk Oakbank Cottage, Oakbank Road, Eastleigh SO50 6PA
Equestrian Events Liaison:	<b>Mark Holland</b>	01989 565249/0845 3308892/07941 427774 (mob) equestrian@trf.org.uk Corn Farm, Devauden, Chepstow NP16 6NS

TRF P.O. Box 196 Derby DE1 9EY

## STATIONERY & LEAFLETS

Keepers of Stationery:	<b>Debbie Hutchinson</b>	Leaflets & Membership Forms
	<b>Fred Ellison</b>	Letterheads & Compliments Slips
Display Equipment:	<b>Leo Crone</b>	01325 463815 (7a.m. - 5p.m.) Display boards held at Ut 10, Red Barnes Way, McMullen Road, Darlington DL1 2RR

## REGIONAL RoW ADVISORS

Wales & West Midlands	<b>Tim Stevens</b>	01547 529946 Offa's Road, Knighton LD7 1ES
South & South West	<b>Dave Tilbury</b>	See above for contact details
Eastern	<b>Richard Sugden</b>	01354 651390 home@rlsugden.fsnet.co.uk 122 Station Road, March, Cambridgeshire PE15 8NH
East Midlands	<b>Robin Hickin</b>	See above for contact details

## TRAIL MAGAZINE ADVERTISING

**Display Ads:** For Advertising Rates please contact Fred Ellison, see above for contact details.

**Members Classifieds: FREE OF CHARGE** Enclose membership number.

**ALL Commercial Advertising** to be paid for - £1 per line, £5 minimum.

Please send all classifieds with payment if applicable to THE EDITOR.

## EDITOR

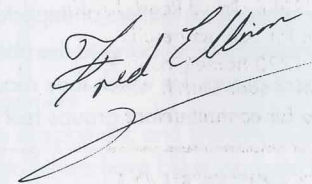
Want to know what is happening in the TRF? The best way is to make sure that your group representative attends the next Executive meeting on Sunday 20th February at the Heritage Motor Centre, Gaydon. There are free tickets to the Motor Centre (limited) and very interesting it is too.

Make sure that RoW updates are notified in TRAIL. That way they reach as wide an audience as possible and members from other areas can be made aware of any local issues before travelling, in some cases many miles, before finding their day has been ruined.

Whilst on the RoW subject do not forget the TRF and TRAIL want to know about all TROs. Many of which are, totally unreasonably, a blunt instrument used by some Highway Authorities. It is the TRF's objective to fight TROs at every level.

That is the serious bit. For the good news keep reading. There are many fun events being organised up and down the country so if you and your mates like the idea of riding another area these are an easy option.

Enjoy your trail riding,



## CONTENTS

EXECUTIVE MEETING AGENDA	2
UPDATE FROM TREASURER	4
NOTICE BOARD	5
WALNA SCAR	7
VOLUNTARY RESTRAINT	9
THE NAPIER TRAIL	10
GLOSSARY	17
THE FORUM	24

### WANTED:

**RUN REPORTS**  
**RIGHTS OF WAY ISSUES**  
**LONG TERM REVIEWS**  
**PRODUCTS OR BIKES**  
**COVER PICTURES**  
*or anything you feel  
would be interesting*

### COVER PHOTO:

From Andy Roberts.  
Two Dales near Matlock.

**All contributions to THE EDITOR**  
**Fred Ellison, Sheepcote Farm**  
**Moor Lane, Wiswell, Clitheroe**  
**BB7 9DG editor@trf.org.uk**

**COPY DEADLINE:**  
**1ST TUESDAY OF THE MONTH**

**BMF Discount Code: TRF11C774**

**bike me aprilia**  
Supports the TRF

# Meeting of the TRF Executive

Sunday 20 February 2011

Heritage Motor Centre, Gaydon, CV35 0BJ

10:00 for 10:30

## AGENDA

1. Chairman's introduction and report
2. Apologies for absence
3. Notice of AOB:
4. Matters Arising - Executive Meeting 25-07-10  
Please see page 3
5. Co-opted Officers  
The Chairman will present the thoughts of the Management Team as a result of the proposal accepted at the 2010 AGM:-  
**"That the roles of all co-opted officers be reconsidered by the principal officers at the next executive meeting"**
6. Rights of Way Update  
The Technical Director will provide an update regarding key activities, campaigns and related legal actions as regards current Rights of Way work.
7. Membership  
The Membership Director will provide an update regarding key activities, campaigns and related matters as regards current membership issues.
  - 7.1 The TRF Shop
8. Communications & Marketing  
The Communications & Marketing Director will provide an update regarding key activities, campaigns and related matters as regards current communications, PR and marketing work.
9. Financial  
The Financial Director will provide an update regarding the financial position of the TRF, budgetary changes or implications and any other fiscal matters of importance.  
There will be an opportunity for Group Representatives to bring to the attention of the Management Team, any matters affecting local groups for which they require assistance or for an application to central funds or any other matter that groups feel should be considered by the Management Team.
10. Any Other Business
11. Date of Next Meeting
  - 11.1 AGM
  - 11.2 Executive

Meeting will finish at approximately 16:30

## Meeting of the TRF Executive Matters Arising

AOB6. New Advert for TBM

A new, full page advert is in place, supported by affiliation with several commercial bodies.

5.2.3 Sarn Helen

The Sarn Helen case is proceeding to a full court hearing. Adrian Pay has been appointed to represent our member.

6.1 PROWI

National TRF have provided bursary funding of £1000 to match that raised by local groups to support PROWI's work.

6.3 National TRO Monitoring Service

A pilot programme has been established in conjunction with a database for the management of the TRF's legal casework. Currently managed by Robin Hickin, it is hoped to launch a website version where members can notify us of examples in their area. The ad hoc notice system currently in place is available to members.

6.3.2 RoW Workshop

The TRO Workshop is still to be run.

6.4.1 Warwickshire 'bridge' TRO

Robin Hickin to update

7.1 Direct Debit

Debbie Hutchinson to update

7.2 Annual Membership

Annual rolling membership is now in place

7.3 PR Matters

Richard Simpson to publish our successes publicly.

Richard Simpson to promote the TRF with the new Adventure Magazine.

Richard Simpson has some new images which he is going to publish

Richard to come up with a policy to re-energise the members and take into account the Devon model. Andy asks members to feed back their experiences to Richard.

8.1 Legal Management

We know of one sympathetic and knowledgeable solicitor, Margaret Stevenson, whom we are already using. No others have been suggested.

Alan Kind has agreed to act as the TRF intermediary in legal cases and provide guidance and case management reports as required.

9.1 The ACU, MCIA and AMCA have formed the Motorcycle Sport Strategy Group which although we are unaware of their impact have met with some success in government circles (allegedly).

# UPDATE FROM THE TREASURER MORE DONATIONS GRATEFULLY RECEIVED

Since my last note in December's TRAIL donations to the Fighting Fund are:

<b>Gloucester TRF</b>	<b>£10742 (yes this is correct!)</b>
<b>Loddon Vale TRF</b>	<b>£2000</b>
<b>Private Members</b>	<b>£4679</b>

Thanks to everyone who has given. The need is ongoing and rest assured the money will be put to good use.

PROTECTING  
GREEN Arnold Brewer

# TRF EXECUTIVE MEETING

SUNDAY 20TH FEBRUARY 2011

10 a.m. for 10.30 a.m.

*Heritage Motor Centre,  
Banbury Road, Gaydon, Warwickshire CV35 0BJ*

## NOTICE BOARD

### STOLEN BIKE

My Honda SL230 reg P448 FEJ has been stolen. Colour silver, as per picture on last year's TRF calendar. It's a very rare bike and old though perfect mechanically so I can't understand why it's been stolen.

I treasured it - best trail bike I have ever had and had a disk lock on the front and a high quality "U" lock on the back which can't be cut with a hacksaw. Yet it was cut cleanly through.

Stolen between 4 pm 20th January and 1 pm 21st January.

Chassis MD331002549,  
Engine MD33E1002572

*Gordon Dalgarno*

### MANCHESTER GROUP NEW VENUE

The Fletcher's Arms, 445 Stockport Road,  
Denton, Manchester M34 6EG  
Tel: 0161 336 5555, Fax: 0161 336 0768.

*Pete Burke, Manchester TRF*

### EAST YORKS GROUP NEW VENUE

2nd Tues, 8pm, The Griffin, Market Weighton,  
York YO43 3AN.

*Doug Jaram, East Yorkshire TRF*

### TEESSIDE & NORTH YORKS CAMPING WEEKEND

**30th-31st July 2011**

Now fully booked please do not ring.

*Many thanks Richard Dodds*



**ASTURIAS  
Trail  
TOURS**

Spanish Adventures  
for You and  
Your Motorcycle

Customised trail tours for enduro-trail (250 to 450cc)  
and big trail bikes (BMW GS, KTM 990 etc)  
in Asturias Northern Spain. All levels of rider catered for.

[www.asturiastrails.com](http://www.asturiastrails.com)

# FORTHCOMING EVENTS

## **An evening with Austin Vince:**

20th February Ace Café Adventure Day 25th February Dundee  
22nd February Brighton 28th February London  
24th February Edinburgh

Full details of how to get tickets etc are at [mondoenduro.com](http://mondoenduro.com) on the 'events' page.

## **Devon Group: Sam Manicom "Tortillas to Totems":**

25th February 2011. Visit [www.trfdevon.org.uk](http://www.trfdevon.org.uk) for further details.

## **Treadlightly Ambassador Training:**

6th March 2011. Email [info@treadlightly-uk.org](mailto:info@treadlightly-uk.org) for further information.

## **Devon TRF Teign to Tamar:**

2nd & 3rd April 2011. Contact Debbie Hutchinson [debbiehutchy@btinternet.com](mailto:debbiehutchy@btinternet.com) or 07966 438907 for more information.

## **Exmoor Forest Ride Day:**

17th April 2011. Email [mark@bagborough.co.uk](mailto:mark@bagborough.co.uk) for an entry form.

## **2011 BMF Show Dates:**

14 & 15th May 2011 - BMF Show - Peterborough Showground.  
11 & 12th June 2011 - Look out for announcements of the venue.  
9 & 10th July 2011 - Border Union Showground, Kelso, Scotland.  
10 & 11th July 2011 - Lincolnshire Showground, Lincoln.

## **Wiltshire TRF Wessex Wanderer Weekend 2011:**

21st & 22nd May 2011. See page 21 for further information.

## **Northumbria TRF: Bikes, Bevies & Banter 2011**

4th and 5th June 2011. Ring Neil on 07939 038180 or Nic on 07931 838587 for further information.

## **Trail ride for the Mentally Handicapped**

Saturday 25th June 2011. 13:00 hrs at Gwyddon Forest, Abercarn, South Wales.

## **Charity Trial**

Sunday 26th June 2011. 10:30 hrs at Gwyddon Forest, Abercarn, South Wales.

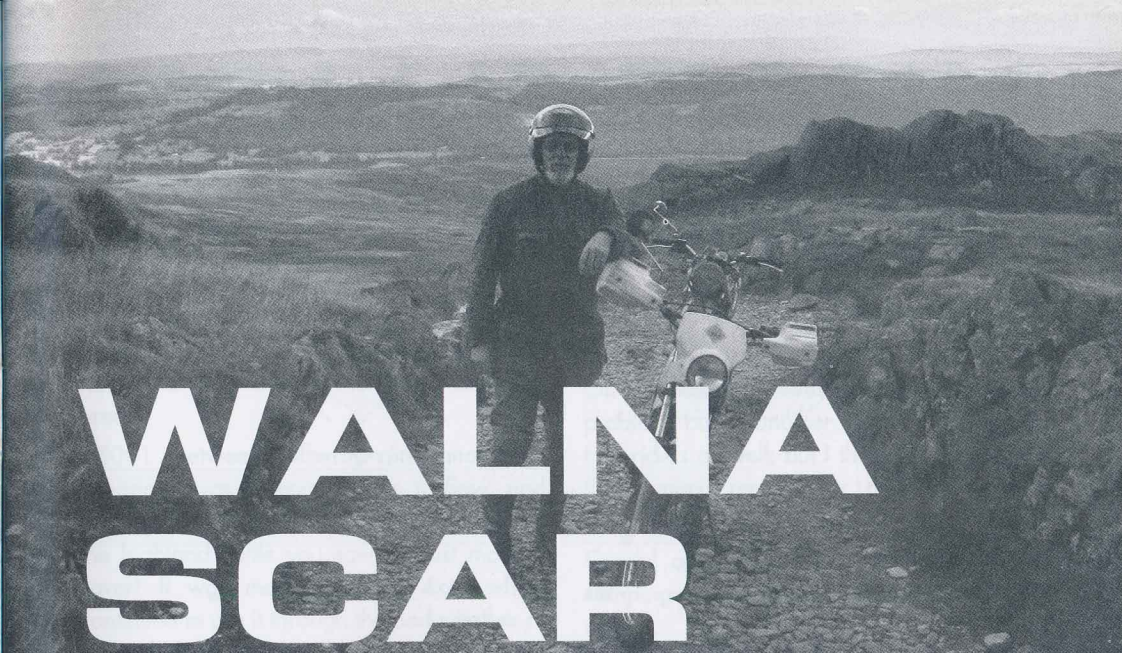
## **Teesside & North Yorkshire TRF - Camping Weekend:**

30th & 31st July 2011

**FULLY BOOKED**

**MAKE SURE YOUR EVENT IS LISTED**

Send any details to The Editor (see contact details inside front cover)



# WALNA SCAR

On January 11th the Lake District National Park's ROW Committee met to reconsider the Status of Walna after the Inspector's decision that it should be a BOAT was quashed in August due to a minor technical mistake made by the Inspectorate in circulating paperwork.

The quashing had reverted it to Bridleway.

The Committee had to decide whether public vehicular rights of way had been established in the centuries before the First World War perhaps by locals and tourists, but mainly by horse and cart traffic servicing the quarries and mines along the route, or whether that accepted use had been private/with permission, i.e. by virtue of the leases and whatever under which the quarries and mines operated.

If they thought such public rights had been created, then their only choice was Restricted Byway.

If they thought that use had been private, they had to decide if motorcycle use from the First World War to 1930 had been sufficient to create a public right of way; if so BOAT would

be the right decision.

Unlike the Inspector they went in favour of the horses and carts, long before motorcyclists came along.

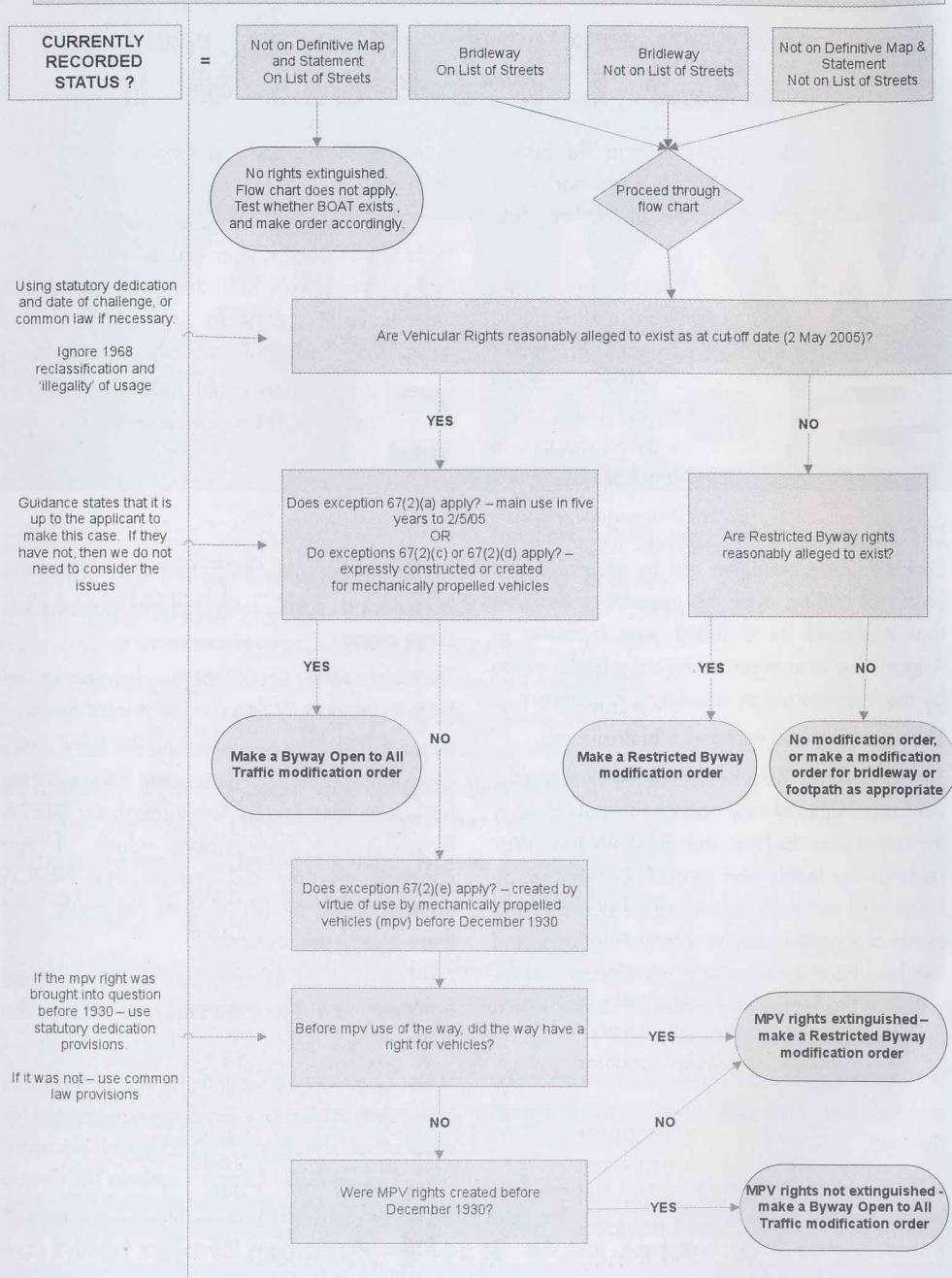
They were really upset that this decision forced them to confirm Walna as a Restricted Byway.

Several of them questioned hard this overturning of natural justice and fairness. They had to be lead line by line through the DEFRA Byway Claim Flow Chart, which, if you conclude as they did, means that NERCA exception Sect 67 (2) (e) does not apply, and there is only one outcome.

Cold comfort for us, only very slightly warmed by their obvious reluctance to make the decision they did.

What next; well we've until the end of March to make our objections and representations in support of the Inspector's original decision. Steve Pighills ROW Officer Cumbria TRF Group p.s. We're still awaiting the Inspectorate's decision on Garburn, already 4 month's later than I'd expected.

## BYWAY CLAIM FLOW CHART



# VOLUNTARY RESTRAINT

At the end of December Cumbria TRF had a report from LARA via Tim Stevens and Alan Kind of a dissatisfied farmer in the Langdale area.

U5001 between Tilberthwaite and Little Langdale was becoming an iceflow and making it really hard work to get to his stock - the highland cattle you saw on last month's cover! It was mainly due to 4x4s which continued to use it through the bad weather at the end of the year. Could any help be given?

We made contact with the 4x4 organizations - the Green Lane Association (GLASS) and N. Cumbria 4x4s - who both immediately put advice notices on their websites. Cumbria CC put (rather tardily) information on the HOTR website, and we got, via Dave Tilbury, LARA Voluntary Restraint signs as seen herewith, organized.

It's the first time for a while that Cumbria TRF has got involved in such a thing, and making sure that the County Council, the National Park, and the National Trust who own the land, were happy took a few weeks, but by mid January the signs were in place - now we know what we're doing we could be quicker another time.

When we talked to the farmer as we put up the signs he told us firstly that he quite accepted MPV rights, but interestingly that he found trail riders much more responsible and friendly

than the 4x4 users - a feather in our cap definitely.

On this occasion it was 4x4s which gave the problem, but in another situation it might be trail riders as well; but I think that this sort of time limited request for restraint is quite acceptable, and we'll probably use it again.

Careful application could help deflect those campaigning for TROs, where we have so little control.

Steve Pighills  
ROW Officer Cumbria TRF Group

## Voluntary Restraint

The road ahead is **DAMAGED** by ice & snow. 4x4 drivers are asked **NOT TO PROCEED** beyond this point. Motorcyclists are asked to exercise great care.



The future of recreational motoring is in your hands

Name of Lane: UUR5001 High Tilberthwaite

OS Grid Refs: NY308014

Contact: S Pighills, Volunteer Moderator, Cumbria Hierarchy of Trails Pighills@talktalk.net



Valid From/To  
Jan / Feb 2011

PO Box 142, Newcastle upon Tyne, NE3 5YT

LARA 2011. This temporary sign was made by LARA and erected with the knowledge of the Highway Authority www.laragb.org - admin@laragb.org



# The Napier Trail

## Ethiopia 2012

Whilst most people relaxed in front of the TV between Christmas and the New Year a group of intrepid individuals were out in the cold and wet Malvern Hills taking part in a selection test as part of their application to join the Napier Trail expedition in 2012.

The expedition is being run by Malvern based Expedition and Off Road training company TRAILQUEST. The aim is to try to locate, and follow, a trail created by the British Army as part of a mission to rescue European hostages being held in the mountain fortress at Magdala during the Victorian era.

Magdala is a dramatic hilltop fortress located in a remote part of Ethiopia. In 1868 it became the focus of one of the most dramatic rescue missions ever carried out by the British Army when General Sir Robert Napier led a military force of 12000 troops, 8000 auxiliaries and 35000 pack animals (including 44 elephants) over 720km of treacherous terrain to rescue British hostages being held there by King Tewdros II.

It was the most expensive operation ever launched by the British and every item of kit, from the heaviest cannon to the smallest ration pack, had to be transported on foot or by baggage animal to the base of the hill fort before the Army could launch an assault.

An operation of epic proportions and a testament to the "can do" philosophy of the

Victorians it has been largely forgotten about.

The Magdala site was surveyed by the Scientific Exploration Society ( sponsored by Shell UK) in 1996 but the route to the fort remains largely unexplored. The Napier Trail expedition will mount an off road motorcycle expedition (supported by 4x4 ) to follow and record the route taken by General Napier's forces.

Unlike many commercial motorcycle tours this is a genuinely challenging expedition with no guarantee of success. The riders will need to carry all their ration and fuel requirements with them and though, from time to time , they will meet up with a supply vehicle, they will be largely self supporting. Camping rough and working together this will be a challenging trip.

The route will be demanding not just because of the terrain but also due to the climate and altitude. As such team members were selected not just because of their off road riding ability but also for their initiative, team spirit and determination.

Due to the nature of the challenge being undertaken team members are required to undertake additional expedition training throughout 2011 that will cover essential skills such as survival techniques, navigation, first aid, personal fitness and security. In addition their off road riding and mechanical skills will

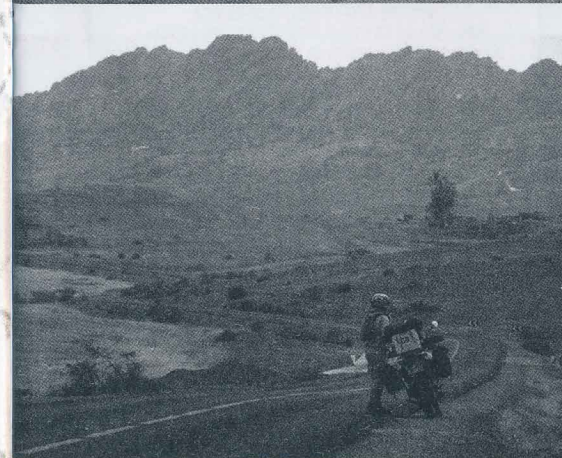
also be developed.

Director of TRAILQUEST, retired Army officer Richard Jeynes said, " We wanted to set up a challenge that would really test peoples skills and teamwork. The initial selection process was designed to be fun whilst, at the same time, allowing applicants to show they had the right attributes to become good team members. We were not necessarily interested in the skills they already had but more in their ability to work hard and be trained for the challenges they will face".

Demand for the six places available was high and, as such, a similar expedition is already being planned. Entitled "The Search for King Solomons Mines" it will follow a 2000km route through Ethiopia to the possible location of the fabled mines on the mystical mountain of Tullul Walle.

In addition to the pure adventure the team have set out to raise money for the charity Help for Heroes.

Expedition Sponsors - KTM UK, Pure Hydration Ltd, Skellerns of Cheltenham, Yeomans, Brays of Malvern





### Tm & Beta Main Dealer

- Other makes of bikes available. We offer support & backup to all our customers.
- New & used bikes in stock at all times.
- Consumables available for all makes & models. Chains & sprocket our speciality.
- Full range of: clothing, helmets & boots Progrid, Acerbis, Smith, Oxtar, No Fear to name a few.
- Accessories & trick bits • Full workshop facilities

### Motocross/Enduro Training Schools

For beginners to the more experienced.

Small groups tailored to experience or one-one tuition. Bookings now being taken or call for more information. Coached by Ben Milward (ACU approved) First Aid Qualified & Public Liability Insurance held.

Unit 9, Hightown Industrial Estate, Crow Arch Lane, Ringwood, Hants BH24 1NZ.

Tel: 01425 474800 Fax 01425 461962

Email mail@inchains.co.uk

Web page & on-line shop: www.inchains.co.uk

## DEVON RIM COMPANY

Alloy, Chrome & Stainless rims supplied for all types of bikes

Full wheelbuilding service - spokes made in-house to fit your wheels correctly

Special prices for TRF members (inc. 20% VAT)  
Wheel rebuilt with high quality stainless spokes - £98  
Wheel rebuilt with stainless spokes & new (Chinese) alloy rim - £188 or with Excell rim - £220  
Collection & delivery by courier - £14.50

Complete wheels supplied for many popular off-road bikes  
New tyres & tubes supplied & fitted  
Hubs reconditioned - Bead Blasting - Welding - Machining  
Specialists in BMW TUBELESS WHEELS (GS Models)

We manufacture stainless rims & spokes for classic bikes, modern Triumphs, Jap cruisers, Harleys & custom bikes

Please contact Doug Richardson (Devon TRF member)

T: 01769 574108 E: devonrim@ukf.net

20 South Street, South Molton, Devon, EX36 4AA.

## TOTALLY TTRS

Specialist supplier for the Yamaha TTR250

### In stock for immediate dispatch:

- All Balls kits- best UK prices
- "Gold" magnetic sump plugs
- Sprockets & wavy brake discs
- Fork gaiters and grips
- Inner tube air valve seals (fit any bike)

### Pimp your TTR with these speciality goodies made specially for TotallyTTRS:

- Lowering links
- Riders wrenches (fit both axle nuts)
- Shorty stainless steel header pipes
- Billet case savers
- Heavy duty sump guards
- Long-headed seat bolts
- Digital speedo sender covers
- (plus exchange service for dead sender units)

### A good range of second-hand TTR250 spares & reconditioned TTR's in stock

Brian Sussex Tel: 01392 875483

Email: sales@ttr250.com

Web: www.totallyttrs.com

## Leisure Trail UK

### KTM CRM DRZ Beta

Full Range of Spares, Accessories & Clothing by Mail Order. Phone or Email for copy of our Price List

### Trail & Enduro Tyres

Full range of Trail, Trials, MX, Enduro & SuperMoto Tyres by Mail Order  
Order Bridgestone, Mitus, IRC, Michelin, Stocked  
Michelin AC10 110/100-18 POA, 80/100-21 POA  
IRC TR8 4.00-18 POA, 3.00-21 POA  
Mitus/Barum TR1 Trials 400-18 POA, 300-21 POA  
Bridgestone ED660 120/90-18 POA, ED663 90/90-21 POA

### Chain & Sprocket Kits

Huge Range of Sprockets both Steel & Alloy Rears  
Supplied with OE Japanese RK O Chains Stocked for most Trail, Trials, MX, Enduro & Supermoto Bikes Mail Order  
O Ring Chain/Sprocket Kit for most Jap Trail/Enduro POA  
O Ring Chain/Sprocket Kit with Renthal/Talon Alloy POA

### All for Next Day Delivery

All Major Credit, Debit & Switch Cards Accepted

Tel: 0115 973 2466

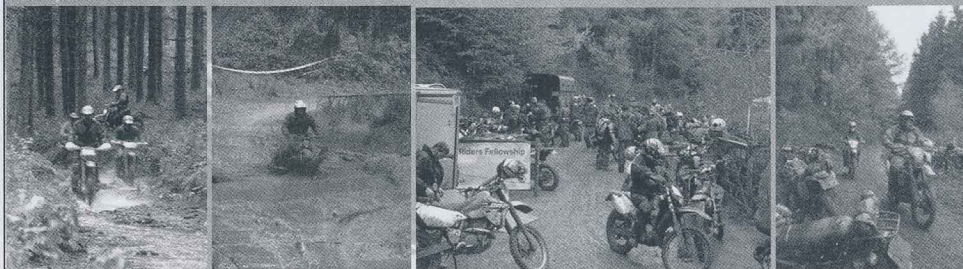
email sales@leisuretrail.co.uk

www.leisuretrail.co.uk



## Somerset TRF EXMOOR FOREST RIDE DAY April 17th 2011

Somerset Trail Riders Fellowship has organised its second non-competitive off-road event within large private forests in the heart of Exmoor.



To keep things interesting we are at a new location with a variety of courses for all abilities and the event is open to bikes and outfits (all must be road legal and insured).

'Hot and cold drinks and BBQ available throughout the day'

'Site open from 9am and clearly defined courses open for riding from 10am until 4pm'

TRF Members - Advanced = £12 / On the day = £15  
Non TRF Members - Advanced = £16 / On the day = £20  
(Please bring your TRF membership cards)

Email mark@bagborough.co.uk for an entry form  
Entries available from 1st March

For Further Information Please Visit:

www.somerset-trf.co.uk



JKeswick produced by





## LINCOLNSHIRE TRF'S TRIP TO NORFOLK



Patron: Lord Fairfax

WHY JOIN THE TRF?

## 8 GOOD REASONS

### FELLOWSHIP

The TRF is the only motorcycling organisation fighting for Trail Riding - all the way to Parliament

### CLUB RUNS & EVENTS

TAKE IN BREATHTAKING COUNTRYSIDE

ASSIST WITH THE CONSERVATION OF YOUR HERITAGE

LEARN NEW SKILLS

INFORMATIVE MONTHLY MAGAZINE

MEET PEOPLE WITH COMMON INTERESTS  
AT HOME & ABROAD

ORGANISED RUNS IN DIFFERENT PARTS OF THE COUNTRY

## CODE OF CONDUCT

### USE ONLY VEHICULAR RIGHTS OF WAY

*Trail riding is only lawful on public roads. If in doubt, check with the Highway Authority or the TRF. Motorcycles and riders must be road-legal. Green Lanes are subject to the same laws as surfaced roads.*

### KEEP TO THE DEFINED WAY ACROSS FARMLAND

*Wheels can damage crops and grass. Wandering from the road onto farmland or moorland is trespassing. If in doubt, ask.*

### GIVE WAY TO WALKERS, HORSES AND CYCLISTS

*- as a courtesy. On narrow lanes, stop and switch off engines.*

### FASTEN GATES TO SAFEGUARD STOCK

*- except those tied open for farming purposes. An open gate invites animals to stray, endangering themselves, crops and traffic.*

### TRAVEL AT A SAFE SPEED

*Ride at a reasonable speed, taking regard of conditions and visibility. This should not exceed the voluntary maximum of 25mph.*

### RIDE QUIETLY

*Machines must be effectively silenced. Use the throttle with discretion as noise can offend.*

### HONOUR THE COUNTRY CODE

*Respect the countryside and those who live, work, and play in it. Green lanes can be valuable habitats, so take special care in spring and early summer.*

### IDENTIFY YOURSELF

*Carry your membership card with you when trail riding, so that you may identify yourself as a current member of the TRF - and display a current membership sticker.*

### ACKNOWLEDGE OTHER USERS

*Trail Riders should acknowledge the presence of other green lane users with a friendly wave or other suitable greeting.*

# Trail Riders Fellowship

## MEMBERSHIP APPLICATION FORM

- Please complete the details below and return the form with a cheque or postal order (payable to the TRF) to: **TRF Membership Secretary, Debbie Hutchinson, Marcliff, Bakers Hill, Exeter, Devon EX2 9TE. Tel: 07966 438907.**

### PLEASE PRINT DETAILS CLEARLY

First name(s) .....

Surname/Family name .....

Joint name (if applicable) .....

Address .....

County ..... Postcode .....

Tel no .....

Email .....

Which local Group do you attend (or propose to attend) if any?

(see [www.trf.org.uk](http://www.trf.org.uk) for list of Groups) .....

What bike(s) do you use on the trail,  
eg: Yamaha DT125R .....

ANNUAL MEMBERSHIP	
<b>SINGLE MEMBER</b> £40 annually	<input type="checkbox"/>
<b>JOINT MEMBER</b> 2nd member at same address, 1 copy of TRAIL to share £60 annually	<input type="checkbox"/>
<b>LIFE MEMBERSHIP - £400.00</b>	<input type="checkbox"/>
• Please send me ..... extra bike stickers (£1 each)	£ .....
• DONATION TO THE FIGHTING FUND Fighting Fund donations are at your discretion but very important in order to defend our rights	£ .....
<b>TOTAL AMOUNT</b>	£ .....

Tick box if you are a full (individual) member of: BMF  MAG  ACU

Other - please state - eg: ACU, NFU, CLA, National Trust, English Heritage

Where did you hear about the TRF? .....

Do you require more membership forms? How many? .....

*I wish to join the Trail Riders Fellowship and I confirm that I have read and agree to abide by the Articles, Memorandum and Bylaws of the TRF\*, a company limited by guarantee. I agree to ride only unsurfaced rights of way which I genuinely believe to be vehicular.*

Signature: .....

*All membership details are stored on the Fellowship's computer and will only be used in accordance with the TRF Rules.\**

*\*Available from [www.trf.org.uk](http://www.trf.org.uk) or from the Membership Secretary.*

# GLOSSARY

*New member? Struggle with all the technical bits in TRAIL or simply can't be bothered because so much goes right over your head? This glossary (thanks to LARA) is the key to most of the terms and abbreviations which can be quite puzzling.*

**ACU:** Auto Cycle Union.

**Abatement:** Legal term for a practical action to reduce a problem, as an alternative to legal action such as going to court. When a user removes an obstruction he is abating it; where the obstruction is unlawful abatement is not an offence.

**Access Land:** Those areas of open moor and mountain that are to be opened to the public (for walking only) under CROW Act 2000.

**Accommodation Road:** A route for the private use of persons with an interest in land to which it leads. Such routes, often created to link fields separated by canals or railways, may also carry public rights. (Similar to 'occupation road').

**Adopted Road:** When a builder makes an estate road it will normally be dedicated to the public, sooner or later, but it will not be maintainable at public expense until it is formally adopted by the Highway Authority (and added to the List of Streets).

**Affidavit:** A written statement of fact witnessed formally by a solicitor. In the absence of a witness, an affidavit can form very useful evidence, for instance of the use of a route.

**AONB:** Area of outstanding natural beauty. This designation allows for tighter planning control so that the landscape is not damaged by development and can provide funding to grant aid landscape improvements.

**Arrest:** Detention of anyone by another; only legal if a serious offence has been committed or attempted (e.g. for criminal damage or obstruction, but not for trespass or riding on a bridleway).

**ATV:** All Terrain Vehicle, usually a light 3 or 4 wheeled open vehicle with motorcycle seating and controls, and often only vaguely 'street legal'.

**BBT or B&BT:** The Byways and Bridleways Trust, a registered charity looking after rights and the laws applying to them. Not a user group.

**BDS:** British Driving Society, concerned with horse drawn carriage driving.

**BHS:** British Horse Society, the governing body of most horse activities.

**BMF:** British Motorcyclists Federation.

**BOAT:** Byway Open to All Traffic. Legal term for a minor unsurfaced or unsealed highway or route with vehicular rights, which is marked on the Definitive map.

**Bridle-path, Bridle Road:** Alternative terms for Bridleway.

**Bridleway:** A Route legally available for walkers,

horse riders, and bicycles.

**CA'68:** The Countryside Act 1968, in which Byways replaced RUPPs, but with downgrading on grounds of suitability etc. Modified by WCA'81.

**CA'68:** S30(1) granted pedal cyclists the right to use bridleways subject to giving way to walkers and horse riders.

**Carriageway:** A route for vehicles of all descriptions. Public carriageway is the highest of the three statuses of Rights of Way. Horse-riders and walkers may also use (almost) all carriageways.

**CLA:** The Country Landowners Association, to which most landowners belong, including the largest ones. They claim to favour the addition of Byways where they are proven, but actively (in my experience - Ed) advise their members to oppose vehicular rights.

**Common Law:** The part of the legal system that is based on old tradition, ancient practice, and the decisions of judges, rather than on Acts of Parliament (which produce Statute Law). Trespass and Nuisance are dealt with under common law. (Not connected with Common land). Common law says that use of a route for a reasonable time can establish public rights; in one case 18 months was enough.

**Common Rights:** A traditional land management idea in which 'commoners' who own a nearby house or cottage have rights on a patch of land (the common). The most important right, today, is that allowing sheep or cattle to graze the land.

**CPRE:** The Council for the Protection of Rural England, which tries to do for the countryside what the National Trust does for property. Known to be prejudiced about motoring on green roads in some areas.

**CRoW:** Countryside and Rights of Way Act 2000.

**Dedication:** The main process by which a right of way can come about. It can be 'express' - a deliberate decision by the landowner, or 'presumed' - by inference from the landowner's actions or inaction.

**Definitive Map & Statement (DM&S):** Official record of public rights in the countryside, available for inspection and copying at county and district council offices. Not all unsurfaced vehicular ways are shown, and any public paths shown may also have vehicular rights. The term 'definitive' is often used (confusingly) to mean 'shown on the Definitive Map' rather than 'beyond doubt'. The Statement which goes with the Map should detail the width, and any gates, etc.

**DETR:** The Government's Department of the Environment, Transport and Regions - which looks after

countryside access, and the Definitive Map processes. It combines the old DoE and DoT.

**DTRFG:** The most excellent Devon Trail Riders Fellowship Group!

**DfT:** Department for Transport

**DMMO:** Definitive Map Modification Order - the official way that all changes (except RUPP reclassification) are made to the DM&S.

**Drove Road:** A route used before the railway era for long distance transport of livestock, usually cattle, which all had to walk to market, sometimes from as far away as Scotland & Wales. Also called Drift and Driving Road. Many green roads were used as drove roads. The right to drive cattle is a component of a carriageway - an all purpose highway. Other than a private right, an easement, the drove is not a stand alone class of highway.

**Footpath:** A route on which any member of the public may walk or run. Prams, and dogs under control, may accompany walkers. Definitive footpaths may carry vehicular rights.

**Footway:** A route for pedestrians alongside a carriageway, normally provided with a kerb and paving. Not the same as footpath, and not shown on the DM&S.

**Founderos:** A route is founderos when it would be likely to bring a horse to its knees. Such a route is 'out of repair'.

**HA '80:** The Highways Act 1980.

**HA '80 s.130:** Protection of public rights

130.-(1) It is the duty of the highway authority to assert and protect the rights of the public to the use and enjoyment of any high-way for which they are the highway authority, including any roadside waste which forms part of it.

(2) Any council may assert and protect the rights of the public to the use and enjoyment of any highway in their area for which they are not the highway authority, including any roadside waste which forms part of it.

(3) Without prejudice to subsections (1) and (2) above, it is the duty of a council who are a highway authority to prevent, as far as possible, the stopping up or obstruction of (a) the highways for which they are the highway authority, and (b) any highway for which they are not the highway authority, if, in their opinion, the stopping up or obstruction of that highway would be prejudicial to the interests of their area.

(4) Without prejudice to the foregoing provisions of this section, it is the duty of a local highway authority to prevent any unlawful encroachment on any roadside waste comprised in a highway for which they are the highway authority.

**Higher rights:** A Bridleway has 'higher rights' than a footpath, and a carriageway higher than a bridleway. Unrecorded rights may exist on any Definitive route, so footpaths and bridleways may have vehicular status, although this, post NERC 2006, will be rare and difficult to establish. It all depends on the evidence.

**Highway:** A route along which members of the public

have a right to pass and repass. Highways are all public, and may be footpaths, bridleways, or carriageways. Technically the highway is the route, the right of way is the right to use it.

**Highway Authority:** The public body responsible for the maintenance of all Highways. For Carriageways, this is usually the County Council, Unitary Authority, or Metropolitan Borough, but Public Path matters are often devolved to District Councils.

**Inclosure:** The legal process which took away common rights and established private landowners, mainly between 1750 and 1850. Roads and access routes were set out in the documentation, and this is a valuable source of evidence for highway status.

**LARA:** The motoring organisations' Land Access and Recreation Association, set up to co-ordinate the defence of motor sport and recreation.

**List of Streets (LoS):** A record kept by the highway authority of all routes in their area which are publicly maintainable. It must be available to members of the public during office hours, it may be in map or list form, and it should show all UCRs as well as tarred roads.

**MAG:** Motorcycle Action Group.

**MCC:** The Motor Cycling Club.

**MSA:** The Motor Sports Association UK, the official governing body of motor sport in the UK. It was a branch of the RAC until recently.

**Natural England:** A new Government Agency created under NERC in 2006, combining English Nature with parts of other agencies to form one body looking after farming, landscape and access.

**Natural England:** "One of the radical reforms announced by the Secretary of State in Rural Strategy 2004 was the establishment of a new integrated agency, comprising all of English Nature (EN), the landscape, access and recreation elements of the Countryside Agency (CA), and the environmental land management functions of the Rural Development Service (RDS), and now known as Natural England."

Visit the defra site.

**NERC or NERCA:** Natural England and Rural Communities Act 2006. This Act created Natural England. Part 6 of this Act extinguished nearly all unrecorded rights for mechanically propelled vehicles.

**NPA:** National Park Authority

**NPACA '49:** The National Parks & Access to the Countryside Act 1949, setting up National Parks and the Definitive Map. Modified by CA'68 & WCA'81.

**Obstruction:** Anything which interferes with the passage of the public along a highway, or with free access over any part of it. It is a 'public nuisance' in law, and committing such a nuisance is a crime; it is the duty of the highway authority to seek, prevent and remove obstructions. Users coming across an obstruction may legally 'abate' it, removing enough to carry on their journey. Otherwise, the Highway Authority should be told. There is also a common law right to divert around the obstruction.

**Occupation Road:** One with private rights for those

with an interest in adjacent land, not quite the same as accommodation road. It may also have public rights.

**Ordnance Survey (OS):** The official map making body for the UK. Two scales of OS maps show Definitive routes, the Pathfinder at a scale of 1:25000, and the Landranger at 1:50000. Outdoor Leisure maps and Explorer maps are special versions of the Pathfinder scale for popular areas. OS maps do not show all vehicular rights, and do show some private tracks.

**ORPA:** 'Other routes with public access' - a designation shown on OS Maps to indicate some (but not all) UCRs (unclassified roads).

**OS:** Ordnance Survey.

**Permissive route:** One where the owner has indicated that for the time being he does not mind use by a given class of traveller. Permission may be withdrawn at any time.

**Prescribed Body:** One of the group of organisations specified in various Acts of Parliament to be notified of changes to the RoW network. The ACU and WTRA are the only prescribed motoring bodies.

**Prescriptive rights:** Legal terms for rights of way established by public use. Such use must be without force, without secrecy, and not as a favour or by permission (i.e. nec vi, nec clam, nec precario).

**Public Inquiry:** An investigation carried on by an independent inspector, often in a public hall; the official way of examining evidence and letting anyone concerned in proposed changes have a say, and produce their own evidence.

**Public Path:** A Right of Way which is a footpath or bridleway, with no higher rights.

**Purpresture:** Encroachment on the roadside, such as garden extensions, and whitewashed stones to keep vehicles off the verge. Even if 'official', it is an illegal obstruction.

**RA:** Ramblers Association - now just called Ramblers - a walking group which seeks open access on foot to wild places.

**Reclassification:** This was the process whereby RUPPs on the Definitive map were reconsidered by the Highway Authority and reclassified as BOAT, Bridleway, or Footpath, depending on the evidence. Such changes do not remove any higher rights which may exist. This process was removed in CRoW 2000

**Restricted Byway (RB):** CRoW 2000 turned all virtually all RUPPs into RB. This is a completely new class of highway that is effectively a carriageway way for all except mechanically propelled vehicles. There will be some exceptions.

**Right of Way (RoW):** A right for any member of the public to travel over the land of another, without needing permission. There are three categories, Footpath, Bridleway, and Carriageway. Use can only legally be for a genuine journey from one place to another. The term is often used in a restrictive meaning for only those routes on the DM&S. Technically all highways are also RoW.

**Road Used as a Public Path (RUPP):** A classification once used on Definitive maps, meaning a

route which is not a footpath or bridleway, but not with conclusive vehicular rights for the public.

**RT Road:** One maintainable by the landowner; ratione tenurae means '(maintainable) by reason of tenure'. All RT roads are public carriageways, sometimes marked on the List of Streets.

**RtR:** Right to Roam - The latest 'want' from the RA that is now being legislated for.

**RUPP:** Road used as a public path.

**Section 116:** Highways Act 1980 section which allows a road to be closed by magistrates if it is not needed, or to be diverted to make it more 'commodious'.

**Section 56:** Highways Act 1980 section, allowing for application to a magistrates court by anyone believing that a highway is out of repair (see Founderos). Magistrates can order the authority to put it in order, but this may mean tarmac.

**SSSI:** Site of Special Scientific Interest.

**Status:** The status of a route refers to rights on it; it may be public or private, and allow carriages, horse-riders, or pedestrians. Vehicular status indicates public carriageway rights - an all purpose highway.

**Street Legal:** Term used to indicate that a vehicle complies with all the regulations for highway use. Trail riding can only take place with street legal machines.

**TRO:** Traffic Regulation Order, which can restrict any class of traffic on any route, for up to eighteen months, or permanently. TROs must be signed clearly so that users know exactly what is forbidden. The sign for no motor vehicles shows a BSA A10 motorcycle flying over a Ford Prefect of the same era, in a red ring. A plain red ring means no vehicles at all.

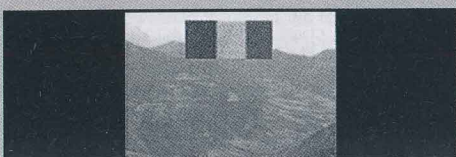
**Unclassified County Road (UCR):** Properly, the 'County' bit is obsolete A road recorded (on the List of Streets) by the Highway Authority as 'maintainable at public expense', and normally having vehicular rights. Such roads are sometimes not tarred, and then are not always marked on Definitive or OS maps. Classified roads are the familiar A and B roads.

**Vehicle:** A mobile contrivance for carrying goods or travellers or providing a service. This includes sledges, bicycles, prams, wheelbarrows, sedan chairs, and litters; as well as carts, cars and motorcycles. Legally almost all vehicles are carriages, and as a bridleway is only for walking or 'leading or riding a horse', evidence of any other public use points to vehicular rights.

**Waymarking:** The use of standard symbols on rights of way 'in the field' to indicate status and direction. A stumpy red arrow should be used for carriageways, blue for bridleways, and for footpaths, yellow. The term is also used, confusingly, for the route marking of named routes like the Pennine Way, but without showing the legal status.

**WCA '81:** The Wildlife and Countryside Act 1981, under which RUPPs are reclassified and other changes are made to the Definitive map.

**Written Reprs:** Written Representation Planning (or DMMO) Appeal.



## ADVENTUROMANIA

OFF ROAD ADVENTURE BIKING IN THE SUNNY CARPATHIAN MOUNTAINS IN ROMANIA

99% off road adventure tours riding trails & tracks through the mountains & forests of Romania. Over 100km per day on thousands of different trails in breathtaking scenery - a true off road paradise.

- Guided tours suitable from novice to expert March - October
- New Yamaha WR250s, CRF 230s, 10 bikes in total or bring your own bike
- Different tours each day through forests, meadows & up and down mountains
- Transfers from airport - 2 hours
- Full support & backup
- Excellent food & accommodation, pool table & bar
- Direct cheap flights available from Luton to Timisoara with Wizzair

For more information contact Steve or Vica:

- Email: sf.palmer@virgin.net
- UK tel: 01368 840728
- Romania tel: 0040 (0)722 138774

[www.adventuromania.co.uk](http://www.adventuromania.co.uk)

## DIRTYBOYZ OFF-ROAD SUPPLIES

- CHAINS
- SPROCKETS
- TYRES
- TUBES
- GRIPS
- LEVERS
- AIR FILTERS
- OIL FILTERS
- OILS
- BEARINGS
- BODY ARMOUR
- BOOTS etc, etc...

ALL PARTS FOR MOTO X, ENDURO, TRIALS BIKES AVAILABLE.

Discount available for TRF members

CALL ON 07894 830482

EMAIL [dirtyboyz-offroad@hotmail.co.uk](mailto:dirtyboyz-offroad@hotmail.co.uk)

## DISPLAY ADVERTISING

### BLACK & WHITE

- 1/4 PAGE £36
- 1/2 PAGE £66
- FULL PAGE £110

### COLOUR

- 1/4 PAGE £72
- 1/2 PAGE £132
- FULL PAGE £248

## Peak District Trail Tours

Trail riding in the picturesque Peak District on some of the best and most varied trails in the country

Bring your own motorcycle and be led by an experienced trail guide with a vast knowledge of the trails and green lanes in the area

For more information contact Carl Petford

07973 479274

Wiltshire Trail Riders Fellowship

# Wessex Wanderer Weekend 2011

May 21st and 22nd 2011

A weekend of guided rides for national TRF members hosted by the Wiltshire TRF Group

Wiltshire and the surrounding area offer an outstanding network of legal rights of way in one of the most beautiful parts of England.

An invitation is extended to national TRF members to join us for a weekend of guided runs led by experienced local run leaders in groups with a maximum size of 6 riders and catering for all - from the beginner to the progressive.

The event will be centred on the Three Magpies public house near Devizes. Camping is available at a cost of £10 per night. A list of local b and b accommodation will be available.

Advanced bookings only will be accepted with an individual ride donation to the Group of £30 for the weekend to include a pig roast on Saturday evening. Additional hog roast tickets for non riding family members are available at £10 each.

## ENTRY FORM

TRF Membership number: ..... Local TRF Group .....

Name: .....

Address: .....

Postcode: ..... Email Address: .....

Home Phone: ..... Mobile Phone: .....

Bike manufacturer and model: .....

Type of run preferred; [please delete inappropriate ones]:  
Beginner/Gentle & Scenic/Big trail bike/long day and progressive

Date: ..... Member's Signature: .....

**By signing this entry form I confirm that I have read, fully understand and agree to the indemnifications overleaf.**

Please return form and remittance payable to: Wiltshire TRF at 2011 Wessex Wanderer, 260, Hill Street, Hilperton, Trowbridge, Wiltshire BA14 7RS

Confirmation of booking will be emailed to entrants together with contact details to book accommodation. Final instructions will also be emailed nearer the 21st May.

When the event is fully booked cheques will be returned and entry forms retained in case of late availability. Entries must be prepaid and pre-booked, tickets are non refundable.

## Indemnifications

- I confirm that the information in this entry form and the information given is correct.
- I confirm that I understand the nature of the weekend I am entering and am competent to take part. I will not take part if I have any doubt about my ability.
- I confirm that any vehicle I use will comply with the highway regulations and be fit for road use.
- I confirm that I will ride throughout the weekend in accordance with the TRF Code of Conduct.
- I confirm that I will not hold any run leader of the TRF responsible for any traffic offences that may arise in prosecution such as section 59 or financial penalties. Run leaders will take all necessary precautions to avoid potential prosecutions but neither the local club nor the run leader will be held liable for any traffic or financial penalties imposed on individual riders
- I understand that the weekend cost [£30] covers my ride donation and pig roast. Booking and payment for camping with the site owner will be my responsibility. Details of the site are available at <http://www.threemagpies.co.uk/home.php>
- Before taking part in the event, I will read and be bound by and comply with any regulations and final instructions issued by the organisers.
- That I am fit and not suffering from any physical or mental disability which would impair my safe participation in the meeting and I undertake to inform the organisers immediately should any change in my condition occur which I have reason to or ought to have reason to believe would affect my ability to continue to participate in this fun weekend. I also authorise any hospital or medical practitioner to furnish information relative to my medical condition to the TRF.
- I will not participate whilst under the influence of alcohol or intoxicating drugs and that if I am taking any prescribed medication I will inform the event organiser and seek approval to participate before taking part.
- That as a participant, I accept that I am responsible at all times for my own actions
- I further agree that I shall not seek to claim against the TRF, the organisers nor their officials, or other bodies/individuals connected with the event in respect of any damage to my property how so ever caused and whether by negligence or breach of statutory duty of the said body or persons.
- I also hereby agree that if the applicant should sustain any injury from any cause whilst taking part in the event and as a result bring a claim for compensation against you or the organisers or officials or entrants I WILL INDEMNIFY AND REIMBURSE any sum which you may be required to pay as a result of such claim.



in conjunction with



## Devon TRF Teign to Tamar Spring 2011

2nd & 3rd April 2011

*Devon's Teign to Tamar is back the first weekend of April 2011 and Devon Members invite a select few to their fourth weekend of guided trail riding in South Devon, where you will ride some of the very best trails in the area between the Rivers Teign and Tamar and to the South of Dartmoor.*

**Riding will take place on Saturday 2nd and Sunday 3rd April 2011**

Again we will be using Wheeldon Farm as our base for the weekend. It's the perfect place with its array of local trails leading out from the Farm, along with it being a nationally recognised off-road motorcycle training centre, with excellent self catering accommodation set in the heart of the South Hams, to check the facilities available go to <http://www.wheeldontwo.co.uk/index.htm>

Also included in the price is an evening meal for all participants at Wheeldon, to ensure a sociable Saturday evening.

We endeavour to cater for all riding abilities, starting and finishing at Wheeldon Farm, where overnight security will ensure your bike and kit is well cared for.

There is a maximum entry of 30 riders and Wheeldon Farm can accommodate up to 13 people (17 if some are couples) at £50pppn (or £40pppn if sharing), this will include full English Breakfast.

More local B&B 'overflow' is available, along with camping at a local campsite or limited campervan space at Wheeldon Farm.

Two days guided riding and an evening meal for Saturday will cost £60 per rider.

**Contact - Debbie Hutchinson - 07966 438907 or [debbiehutchy@btinternet.com](mailto:debbiehutchy@btinternet.com) (email preferred) for more information or to book a place.**

**All entries are dealt with in a strict 1st come, 1st served basis (subject to a deposit being received) and numbers are limited to 30.**

**ALL MOTORCYCLES AND RIDERS MUST BE ROAD LEGAL AND MEMBERS OF THE TRF**

Before you ride, you will be asked to declare that -

- You are physically and mentally fit to participate and are competent to do so.
- You understand the nature and type of event and the risks involved and agree to accept these risks even if such risk may involve negligence on the part of the organisers/officials.
- You will not seek to claim against the TRF, their organisers or officials, the landowners, or other bodies or individuals connected with the event in respect of any damage to your property regardless of the cause, including any damage caused by the negligence or breach of said bodies or persons.
- Your motorcycle is road legal and effectively silenced.

**RIDERS OF NOISY MOTORCYCLES WILL NOT BE ALLOWED TO PARTICIPATE**



**FUNDS RAISED GO DIRECTLY TO ENSURING THAT AS MANY DEVON GREEN LANES REMAIN OPEN AS POSSIBLE**

# THE FORUM

*The Place to air your views and encourage lively debate.*

## OPINIONS CAN BE CHANGED

Sunday January 3rd myself and two friends were refuelling our trail bikes at Bottesford garage when we were approached by a rather red faced gentleman who wanted to know if we were the bikers he had seen at Belvoir earlier in the day?

We then got talking and found earlier in the day he had reversed his new automatic car into a ditch. And had been ably assisted in getting his car out by 7 guys on bikes like ours.

He then said I never used to think much of you lot, riding the local lanes, but had now totally changed his mind and could not say enough good things about us.

So bravo to the 7 guys that helped this man out, and changed his opinion of trail riders. Although I have never met a trail rider that would not have done exactly the same.

Hopefully the gentleman will tell his story loud and often.

Mick Hibbert

## DEVON ROW

*The reason for this letter is to highlight the great work that has been achieved by Mark Fishwick.*

*Mark helps out with Brian Sussex on the ROW issues in the Devon region and has*

*had a very positive response to some recent work he's been involved with.*

*I would like you to read the letter (written by Mark) as an example to all of you to show what can be achieved with pure grit and determination.*

*As I am aware, there are police officer members within the TRF, but we are not so fortunate in Devon, so I propose that we use this positive result to invite our local force on a ride or two with us.*

*In my view this can only help to promote trail riding and the TRF and outline the members' strong views on only riding legal lanes, and the behind the scenes work that we do.*

Paul Farrow

Hello all,

Some of you may or may not know that back in November 2010, I decided to contact my local police force after hearing that a couple of riders had been stopped and cautioned for riding lane 192-136. I offered to help the officers by showing them where the legal lanes were, after consulting with Brian and Noel I was given the go ahead to do this.

The police were very surprised that somebody would go to the effort of showing them where the legal lanes were, Anyway in November of last year a meeting was set up at Clinton Devon estates head office, as unknown to me the police had sought the help of the Head commons warden, a Mr Bungy Williams, who works for Clinton Devon estates. I was not very happy about

this as he is a known anti. Upon Arrival Mr Williams made his grievances known and stated that although he has nothing against us, he was responsible for the tro on 192-225. He also refused to believe that any of the lanes on the commons area or on Clinton Devon lands were legal. After I had given our side of the story the police were rapidly coming around to us, and were pleased at how much work we have put in. I had taken a map of the commons area and marked it up with all of the lanes that we use minus lane numbers or any details. The police asked if they could take my map away and get our routes checked by the council. I said that was fine. Mr Williams also took a photocopy of my map.

Then last week I heard from the police that they had finished with my map, but that there was a problem with one of the lanes.

This morning I had a phone call from the police asking if they could drop my map off and have a quick chat. They arrived later this morning and have said that they have had all

of the lanes on the map checked by Devon County Council and the Land Registry department. They also told me that even before they managed to get to the council Mr Williams had been in and was not very happy to be told that all the lanes were legal. The verdict is that every single lane on the map is totally legal.

The police have kept copies of the map, so that their officers can check illegal riding.

The police have also said how nice it is to deal with such a dedicated and professional group as the Devon TRF.

I have told the police that I am willing to help in any parts of Devon, should any officers need it, providing I meet with your approval.

I would just like to say that this is not down to me, but all thanks should go to Brian Sussex and other rights of way people that have gone before.

Thanks everybody,  
Mark Fishwick

## FROM THE TRF BULLETIN 1986

### CLIMBER MAGAZINE

Following the editor's call for climbers to stone any trail riders they meet, Alan Kind has asked the Chief Constable of Cumbria Police to prosecute editor Walter Unsworth for inciting violence. Mr Unsworth's outburst beats the famous "all riders are birdbrains" by the RA Secretary Alan Mattingley, although Mattingley is

a far more dangerous foe given the Parliamentary influence of the RA. Deputy Leader of Labour-controlled Newham Council said: "We should watch carefully the Socialist Countryside Group and should have our 'mole' in there to report back. "We have the same moles in Friends of the Ridgeway, another very anti-trail riding pressure group. The Socialist Countryside Group is at 9 Poland Street, London W1V 3DG.

# GROUPS

**AXE VALE** David Clegg, Tel: 01275 373652 (Home), Mob: 0793 1220895. 2nd Tues, 8pm, Windmill Inn, Nore Road, Portishead.

**BLACK COUNTRY** John Oseland, Tel: 01902 656011 1st Tues, 9pm, The Longford House, Watling Street, Cannock.

**BRISTOL** Glenn Summers, Tel: 01454 619246 4th Mon, 8pm, The Midland Spinner, Warmley, Bristol.

**CAMBRIDGE** Tony Lacey, Tel: 07753 820520 1st Thurs, 8.00 p.m., The White Swan, Elsworth Road, Conington, Cambridge CB23 4LN.

**CORNWALL** Adam Hedley, Tel: 01579 349217 3rd Thurs, 7.30 - 8.00 p.m., The Borough Arms, Bodmin.

**CUMBRIA & CRAVEN** Roger Harris, Tel: 01539 725198 2nd Tues, 7.30pm, The Gilpin Bridge Hotel & Inn, Bridge End, Levens, Nr. Kendal LA8 8EP (on A5074 at junction with A590).

**DERBYSHIRE & SOUTH YORKSHIRE** Mick Ellison, Tel: 07780 674192 2nd Tues, The Angel Hotel, Sprinkhill, Eckington, Nr. Chesterfield, Derbyshire.

**DEVON** John Heal, Tel: 01626 366860 2nd Tues, 8pm, The Dolphin Hotel, Station Road, Bovey Tracey, TQ13 9AL.

**DORSET** W. John Williamson, Tel: 01929 553640, Mob: 07850 727873 1st Tues, 8pm, Greyhound Inn, Winterbourne, Kingston, Nr. Bere Regis.

**EAST MIDLANDS** Graham Chinnery, Tel: 01332 863433 2nd Wed, The Clock Warehouse, London Road, Shardlow, just off the A50.

**EAST YORKSHIRE** Doug Jaram, Tel: 01482 659516/07950 415223 2nd Tues, 8pm, The Griffin, Market Weighton, York YO43 3AN.

**ESSEX** Cliff Eves, Tel: 07515 330423 2nd Wed, The Cross Keys, The Green, Hatfield Peverel, Essex CM3 2JQ.

**GLOUCESTER** Richard Simpson, Tel: 07812 402021 1st Wed, 8pm, Wagonworks Club, Tuffley Ave., Gloucester.

**HERTFORDSHIRE** John Fox, Tel: 01462 811654 2nd Wed, 8.30pm, Shire Park Social Club, Shire Park, Central Drive, Welwyn Garden City AL7 1AB.

**HIGH PEAK & POTTERIES** Graham Till, Tel: 01782 510533/07971 477024 2nd Tues, 8.30 - 9.00pm, The Stafford Arms, Bagnall (2 miles out of Leek).

**ISLE OF WIGHT** Andy Hawkins, Tel: 01983 617232 1st Wed, 8pm, The Eight Bells Inn, Carisbrooke, Newport, IOW.

**KENT** Steve Neville Tel: 01474 742705 2nd Tues, 8.30p.m. for 9pm, The Moat Pub, Wrotham, near Brands Hatch.

**LANCASHIRE** Tony Davenport, Tel: 07538 195212 1st Tues, Black Bull, Hall Lane, Mawdesley.

**LINCOLNSHIRE** Paul Vernon, Tel: 01522 889079 4th Thurs, 8pm, Lincolnshire Poacher, Bunkers Hill, Lincoln.

**LODDON VALE** Sean Comber, Tel: 07763 870244 2nd Thurs, Inn on the Park, Woodley, Reading.

**MANCHESTER** Phil Kinder, Tel: 07809 647293 2nd & 4th Mon, 9pm, The Fletcher's Arms, Denton.

**MID WALES** Tony Rooney, Tel: 01239 698349 Last Thurs, 7.30pm, The Crown Inn, Rhayader except July & December.

**NORTHUMBRIA** Nic Gilbert, Tel: 07931 838587 1st Wed, 8pm, The Staffs Club, Blaydon, NE21 4JB.

**NORTH WALES** Neil "Timpo" Thompson, Tel: 07980 555874 1st Wed, 8pm, Cross Keys, Buckley, OS 117 290 637.

**NORWICH** Jeremy McNulty, Tel: 07786 426055 2nd Wed, 7.30pm, White Horse, Trowse, Norwich.

**OXFORDSHIRE** Peter Cole, Tel: 01844 214075 3rd Thurs, 8pm, The Gladiator Sport & Social Club, 263 Iffley Road, Oxford, OX4 1SJ, next to Ridgeway VW Garage.

**PEAK DISTRICT** Alan Gilmore, Tel: 01332 553246 1st Thurs, 8pm, The Joiner's Arms, Church Road, Quarndon, Derby.

**RIBBLE VALLEY** Peter Ashurst, Tel: 07817 928329 2nd Tues, 8.30pm, Brown Cow, Chatburn, Clitheroe (off A59).

**SOMERSET** Fran Bunce, Tel: 01278 662605 2nd Thurs, 8pm, The Old Pound Inn, High Street, Aller Langport.

**SOUTHERN** Colin Lindstrom Tel: 07818 404240 3rd Thurs, 8pm, Southampton & District MCC, Woodside Ave., Eastleigh, (opposite Halfords).

**SOUTH LONDON & SURREY** Steve Sharp, 0208 773 4204 8.30pm, 4th Wed, Nescot Centre for Sports Development, Banstead Road, Ewell, Surrey.

**SOUTH NORTHANTS** Graham Walker, Tel: 07841 158820 2nd Monday, 9pm, The Old Sun, 10 Middle Street, Nether Heyford, Northampton NN7 3LL.

**SOUTH WALES** Christian James, Tel: 01446 410073 1st Thurs, 8pm, Ty Nant Inn, Morgantown, Nr Radyr CF15 8LB.

**SOUTH WEST WALES** Last Tues, Corner House Pub, Commercial Street, Ystalyfera, Swansea.

**SUFFOLK** Richard May, Tel: 01787 374073 Last Wed, Manger Pub, A134 Sudbury Rd, Bury-St-Ed.

**SUSSEX** Julian Flack, Tel: 01306 740586 Last Thurs, Ashington Social Club, Rear of Red Lion, A24, 9 miles North of Worthing.

**TEESSIDE & NORTH YORKS** Harry Nicholson, Tel: 01642 657063. 3rd Tues, The Ranch House, Thoraldby Farm, Nr Stokesley, map ref 93...493074.

**THAMES VALLEY** Julian Ogle, Tel: 0208 5799778 3rd Mon, District Arms, Woodthorpe Rd, Ashford, Middlesex.

**VIRTUAL PEAK GROUP** Paul King, kingy@virtualpeaks.co.uk Tel: 07966 289778. This is a virtual group at www.virtualpeaks.co.uk

**WEST ANGLIA** Mark Andrew, Tel: 01933 413458 1st & 3rd Thurs, Scott Bader Social Club, opp. Parish Church, Wollaston, Wellingborough.

**WEST MIDLANDS** David Chamberlain, Tel: 0121 783 3438 1st & 3rd Wed, Wilmcote Mens Club, Stratford on Avon.

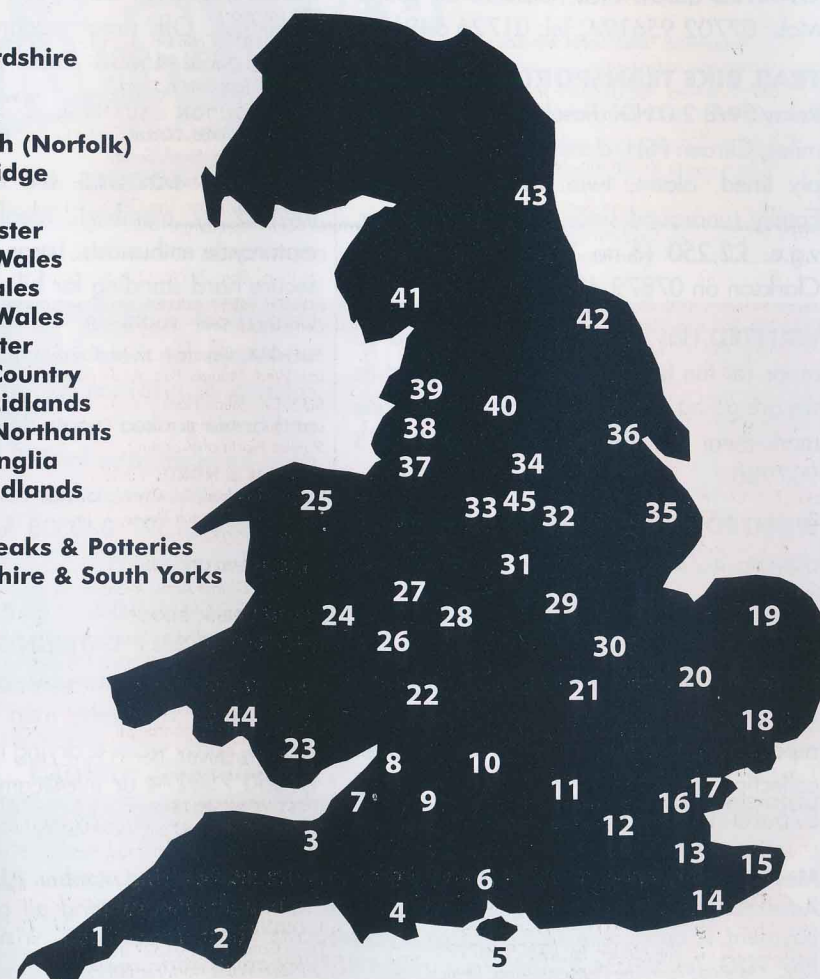
**WEST YORKSHIRE** Paul Dearden, Tel: 07901 381629 1st Thurs RoW 7.30 pm, Main Meeting 8.00pm, Cue Gardens, Stadium Mills, Stadium Road, Bradford BD6 1BJ.

**WILTSHIRE** Vic Price, Tel: 01380 724651 1st Tues, The Bell On The Common, Broughton Gifford SN12 8LX.

**WORCESTERSHIRE** Dave Gunster, Tel: 01527 456095 Mob: 07960 422523 1st Tues, White Hart, Fernhill Heath, Worcs.

# WHERE TO FIND THE GROUPS

1. Cornwall
2. Devon
3. Somerset
4. Dorset
5. Isle of Wight
6. Southern
7. Axe Vale
8. Bristol
9. Wiltshire
10. Swindon
11. Loddon Vale
12. Thames Valley
13. South London & Surrey
14. Sussex
15. Kent
16. Hertfordshire
17. Essex
18. Suffolk
19. Norwich (Norfolk)
20. Cambridge
21. Oxford
22. Gloucester
23. South Wales
24. Mid Wales
25. North Wales
26. Worcester
27. Black Country
28. West Midlands
29. South Northants
30. West Anglia
31. East Midlands
32. Peaks
33. High Peaks & Potteries
34. Derbyshire & South Yorks
35. Lincolnshire
36. East Yorks
37. Manchester
38. Lancashire
39. Ribble Valley
40. West Yorks
41. Cumbria
42. Teesside & North Yorks
43. Northumberland
44. South West Wales
45. Virtual Peak



# MEMBERS CLASSIFIEDS

**HONDA DEAUVILLE NT700 VA-8** July 2008 ABS model with only 3800 miles. Centre stand, additional extras 45 ltr top box, heated grips, knuckle deflector set & speaker kit (worth over £800) £4800. Photos available. Email [rob.rowley@tesco.net](mailto:rob.rowley@tesco.net) or Tel: 01952 727333 Much Wenlock (Salop).

**WANTED** Serow blue nearside air scoop Mob: 07702 956194, Tel: 01726 64911.

**TRAIL BIKE TRANSPORTER** 02 Citroen Relay SWB 2.0 HDi diesel van, genuine 51k miles, Citroen FSH, 6 mths tax, 7 mths MOT, ply lined, alarm, twin electrics tow bar. Family runaround since 06, mature owner, v.g.c. £2,250 (& no VAT!). Phone Roger Clarkson on 07879 430976 (Lancs).

**WANTED** Has anyone got any marked up maps for the Isle of Man I could look at as we are going over this year or does anyone mark them up? Thanks Pete Monk 07973 907908.

**WANTED** Kawasaki Super Sherpa or Honda SL230. Mechanically sound but cosmetics unimportant. Gordon 07919 148758 or [gordon4g@yahoo.co.uk](mailto:gordon4g@yahoo.co.uk)

**TTR250 SPARES WANTED!** Anything considered including whole bikes for repairing or breaking. Can arrange courier collection if required. Brian Sussex 01392 875483 (Exeter). [briansussex@hotmail.com](mailto:briansussex@hotmail.com)

**Members Classifieds: FREE OF CHARGE** Enclose membership number. **ALL** Commercial Advertising to be paid for - £1 per line, £5 minimum. Please send all classifieds with payment if applicable to THE EDITOR, Sheepcote Farm, Moor Lane, Wiswell, Clitheroe BB7 9DG. Tel: 01254 823893 Fax: 01254 887999 [editor@trf.org.uk](mailto:editor@trf.org.uk)

**SEROW XR250 WANTED** Any age or condition. Cash waiting. Tel: 01782 510533 or 07971 477024.

**BMW PARTS** Front forks to fit Funduro. Good condition £150. Rear shock with remote adjuster £100. Contact 07753 452186.

## ACCOMMODATION

**BRENDAN CHASE B&B** Windermere village centre location so close to pubs and restaurants, from £25 per night bed and breakfast. Off street parking for bikes. Tel: 015394 45638. Email [brendanchase@aol.com](mailto:brendanchase@aol.com), website: [www.placetostay.windermere.co.uk](http://www.placetostay.windermere.co.uk)

**HOLIDAY LODGES IN MID WALES** (owned by member). Ideally suited for motorcycle enthusiasts. Large site with safe, secure hard standing for bikes and trailers. Utility/boot room in all, fully equipped workshops for those essential repairs. Self catering or provision for grocery supplies and home cooked meals delivered to your door. Excellent rates for TRF members. See our website: [www.radnor-revivals.co.uk](http://www.radnor-revivals.co.uk) or telephone 01597 840308 for a brochure and information.

**LLANERCHINDDA FARM GUEST HOUSE & SELF CATERING** - Llandovery, mid Wales. Ideal base for trail riding with local guide available, map room, secure lockup, spray wash & drying room. Contact: 01550 750274 or [info@cambrianway.com](mailto:info@cambrianway.com) or [www.cambrianway.com](http://www.cambrianway.com)

## Trail Riding UK is looking for trail riding guides throughout the UK



If you would like an extra income and you think you can provide an exciting legal ride of between 100 and 150 miles then please contact us:

Email: [askin@tiscali.co.uk](mailto:askin@tiscali.co.uk)

Please give some information on what you can provide and where, along with a brief riding history and what bike you ride at present.

Trail Riding UK will be running several test rides in March 2011.

ALL INCLUSIVE GUIDED TOURS

## Tour Thailand by bike 3 days from £495\*

Thai bike tours offer adventure tours to suit all styles of riding and all levels of ability and for virtually any duration you choose

EXCLUDING FLIGHTS



OFF ROAD



ON ROAD



DAY RIDES



DUAL TERRAIN

Now available...  
short breaks  
1, 2 or 3 day  
on or off-road

Explore Thailand

Discover Yourself

Over 5000 kms  
of trails and tracks



Email: [enquiry@thaibiketours.co.uk](mailto:enquiry@thaibiketours.co.uk)  
Website: [www.thaibiketours.co.uk](http://www.thaibiketours.co.uk)

Bike Tours with UK & Thai Guides