

LLANDOVERY

(OS Map 160, SN 808 429)

Our remote sheep farm (Best B&B in Wales '97) has 15 comfortable en-suite rooms. Blazing log fires, underfloor heating, self service bar, parking, workshop, pressure washer, drying rooms & tons of really great homemade food make this a popular venue for trail riders. We have all the rights of ways marked on our master maps & have GPS's etc.

We have a 22,000 acre 'playground'.

Neil Harries is also available to guide you on the many green lanes in the area.

Can you handle it?

For a brochure:

Tel: 01550 750 274 Fax: 01550 750 300
nick@cambrianway.com



**PHONE NOW
FOR WINTER
SPECIAL OFFER**

THIS SPACE COULD SELL FOR YOU

Interested?

To advertise here
contact Branca
on 07812 897695
or 01772 720237

trailadvertising@hotmail.com



Patron: Lord Strathcarron

TRAIL

The Bulletin of the TRF, the National Club for all who wish to ride Legal Motorcycles on Legal Carriageways. EDITOR: Fred Ellison.

OCTOBER 2004 No. 314



Leisure Trail UK

EVERYTHING FOR THE TRAIL
ENDURO & OFF-ROAD RIDER
KTM, CRM & DRZ SPECIALISTS



New Honda 2004 XR 250 Electric Start



NEW CONTAINER OF JAPANESE TRAILBIKES NOW HERE!!!
2004 KTM'S HERE - LIMITED AVAILABILITY. PRE ORDERS AND DEPOSITS NOW!
BETA 4.0 ALP 350cc also in stock - Demo bike available - It's worth a ride!

QUALITY USED CRM'S AND NEW & USED BIKES CURRENTLY IN STOCK

CRM Mk1	from £1,595	BETA 350 ALP	new £4,250	'99 EXC125	good cond	£1,850
CRM Mk2	from £1,795	SUZUKI DRZ 400S	new £3,995	'00 EXC250	good cond	£2,495
CRM Mk3	from £2,395	XR250 E/Start	new £3,995	'02 EXC200	mint	£2,995
CRM AR	from £2,895	XR250 E/Start	used from £2,295	'03 EXC200	unused	£3,995
'03 BETA 200 ALP	new £3,150	DR250 E/Start	used from £2,295	'03 EXC525	mint	£4,495



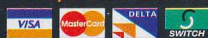
GOOD
USED TRAIL
& ENDURO
BIKES
ALWAYS
WANTED
£££

OAKLEYS YARD, BEECH AVENUE, LONG EATON, NOTTINGHAM

0115 973 2466

sales@leisuretrail.co.uk www.leisuretrail.co.uk

- HONDA CRM250 - FULL RANGE OF ACCESSORIES, SPARES & GOODIES IN STOCK, PHONE OR EMAIL FOR FULL LIST
- CRD PIPES & GUARDS IN STOCK
- FINANCE ARRANGED - QUOTES AVAILABLE ON REQUEST
- ALL MAJOR CREDIT & DEBIT CARDS ACCEPTED



Northern TRF Rights of Way Project Officer Brian Thompson
with His Unusual Trail Mount, a Honda Pantheon Scooter

All Contributions to the Editor Please keep it short and sweet!
COPY DEADLINE: FIRST POST, 1ST TUESDAY OF MONTH

TRF OFFICERS

- CHAIRMAN** Geoff Wilson, 4 Scaur Close, Lazonby, Penrith, Cumbria, CA10 1BT.
Tel: 01768 898584.
- VICE CHAIRMAN** Tim Stevens, 99 Cheshire Street, Market Drayton, Shropshire, TF9 1AE.
Tel: 01630 657627, E-mail: timLARA@aol.com
- MEMBERSHIP SEC.**..... Mary Stevens, P.O. Box 343, Market Drayton, Shropshire, TF9 1WT.
Tel: 01630 657627, E-mail: memsectrf@aol.com
- SECRETARY** Ted Lowres, 53 Stokefields, Guildford, GU1 4LT.
Tel: 01483 535644, E-Mail: ejlowres@ntlworld.com
- TREASURER**..... John Gardner, 119 Hallbridge Gardens, Up Holland, Lancs., WN8 0EP.
Tel: 01695 622792, E-mail: john@gardner119.freeserve.co.uk
- PUBLIC RELATIONS OFFICER**..... Andrew Prince, Stour Lodge, Campden Lawns, Alderminster, Stratford-upon-Avon, CV37 8PA. Tel / Fax: 01789 450366,
E-mail: pr@trf.org.uk
- EDITOR**..... Fred Ellison, Sheepcote Farm, Moor Lane, Wiswell, Clitheroe, Lancs., BB7 9DG.
Tel: 01254 823893, Fax: 01254 887999, E-mail: editor@trf.org.uk
- BMF LIAISON OFFICER**..... David Giles, 22 Ford Lane, Allestree, Derby, DE22 2EW.
Tel / Fax: 01332 552288, E-mail: davegiles@dlgtraining.freeserve.co.uk
- LARA REP.**..... Richard Fordham, 1 Cleveland Place, Peterlee, Co. Durham, SR8 2PA.
Tel: 0191 5872109.
- MAG LIAISON OFFICER**..... Richard Stiling, 2 Bryansons Close, Stapleton, Bristol, BS16 1ES.
Tel: 07974 151439, E-mail: mag@trf.org.uk
- KEEPERS OF STATIONERY**..... Leaflets & Membership Forms, Mary Stevens. *Membership Secretary.*
Letterheads & Compliments Slips, Fred Ellison. *Editor.*
- DISPLAY EQUIPMENT CO-ORDINATOR** Leo Crone, Tel: 01325 463815 (7a.m. - 5p.m.). Display boards held at Unit 10, Red Barnes Way, McMullen Rd., Darlington DL1 2RR.
- EQUESTRIAN EVENTS LIAISON OFFICER** Mark Holland, Corn Farm, Devauden, Chepstow, Monmouthshire, NP16 6NS. Tel Mobile: 07941 427774 (evenings).
- RoW CO-ORDINATOR** Roger Peters, Rose Bank, East Lane End, Morpeth, Northumberland, NE61 3JS. Tel: 01670 519432.

TRF Website <http://www.trf.org.uk>

MAGAZINE ADVERTISING

DISPLAY ADS:

For Advertising Rates please contact Branca Pope: Brabbin's House, Newton in Bowland, Clitheroe, Lancs., BB7 3DZ. Tel: 07812 897695 or 01772 720237, E-mail: trailadvertising@hotmail.com

MEMBERS CLASSIFIED ADS:

20 WORDS - FREE OF CHARGE Enclose membership number
ALL Commercial Advertising to be paid for - £1 per line, £5 minimum.
Please send all classifieds with payment if applicable to: THE EDITOR

Copyright: All material published in TRAIL is the copyright of the TRF.
Use may be freely made of it without prior permission on condition that any material used is credited "reproduced by permission of TRAIL, the National Bulletin of the Trail Riders Fellowship".

The views expressed in 'Trail' are those of its correspondents and not necessarily of the editor or the T.R.F.

EDITOR

As 2005 approaches the TRF is in need of a suitable photograph for the calendar. Last year the response was not as good as I would have hoped hence some of my own pitiful efforts ending up on TRAIL covers (criticise if you must) but the best way to keep them off is to send in your own photos which must be of a reasonable standard and relate to green lanes. They need not necessarily include a bike, see August's TRAIL cover. This year the winner gets a year's free membership as well as seeing their picture on the cover of January's TRAIL, as well as the 2005 Calendar, so get on your bike and get snapping.

Last, but not least, the AGM is on Sunday 31st August, hope to see you there.

Fred Ellison

THE ULTIMATE TRAIL QUADS

BOMBARDIER **BOMBARDIER ATV** **treadlightly!**
Follow No One. LEADING A REVOLUTION



OUTLANDER MAX **OUTLANDER 400**
1 & 2 seat trail quads from 400cc to 650cc



TRF Members on bike, quad & horse
at EGB Northern Championships 2003

QUADTECH.co.uk
Tel: 01434 230 827 / 07762 332 444

CONTENTS

Calendar Competition	4
AGM Agenda	5
Noticeboard	6
Brian Thompson on the Trail	7
Bike Racks	8
Flytipping	9
A Day in the Lakes	10
Group News	12
Letters	15

All Contributions to the Editor Please keep it short and sweet!
COPY DEADLINE: FIRST POST, 1ST TUESDAY OF MONTH

TRF CALENDAR COMPETITION 2005

To the winner:

**A YEAR'S FREE MEMBERSHIP TO THE TRF
YOUR PICTURE ON THE TRF 2005 CALENDAR
& JANUARY'S EDITION OF TRAIL**

**Please send your
glossy colour photos or
high resolution digital to:**

**The Editor: Fred Ellison,
Sheepcote Farm, Moor Lane, Wiswell,
Clitheroe, Lancashire BB7 9DG**

Good Luck!

**CLOSING DATE FOR ENTRIES
FRIDAY 10TH DECEMBER 2004**

ANNUAL GENERAL MEETING 2004

Sunday 31st October

*Heritage Motor Centre, Banbury Road, Gaydon, Warwickshire, CV35 0BJ
(between Warwick & Banbury J12 M40)*

<http://www.heritage-motor-centre.co.uk/location.htm>

Signing-in will commence at 09.45 – BRING MEMBERSHIP CARDS

The meeting will start at 10.30.

(The chairman seeks everyone's help in completing the meeting by 16.30 at the latest)

AGENDA

1. Chairman's welcome
2. Apologies for absence
3. Approval of Minutes 25-10-2003
4. Matters arising
5. Election of officers:
Officers willing to be re-elected are: Chairman, Vice Chairman, Membership Secretary, Secretary, Editor, BMF Liaison Officer, Lara Representative, Keeper of Stationery, Display Equipment Co-ordinator, Equestrian Events Liaison Officer.
Vacant Officer positions are: Rights of Way Co-ordinator, Public Relations Officer, Treasurer, MAG Liaison Officer, National Motorcycle Council Representative.
(Current RoW Co-ordinator has indicated a willingness to be Treasurer)
(Nominations for all positions will be taken from the floor)
6. Elected officer reports:
 - Treasurer (including presentation of accounts)
 - Membership Secretary
 - Rights of way Co-ordinator
 - Public Relations Officer
 - Web site and email
7. Reports from representatives to LARA, BME, CCPR, MAG, NMC.
8. Presentation – Seeing Ourselves as Others See Us – G Wilson & T Stevens.
9. DEFRA MPVs on Rights of Way Consultation & LARA Solutions – Update.
10. TRF Rights of Way Research and Claim Co-ordination Project – Review.
11. Any other URGENT business – at Chairman's discretion.

Lunch break will be from 13.00 – 13.45

NOTICE BOARD

TEESSIDE AND NORTH YORKS GROUP AGM

16th November 2004,
The Ranch House,
nr Stokesley.

Pie and peas and an auction of
bike kit on the night.

Mark Bieganski, Secretary

BYWAY CLAIM - TELSCOMBE TYE

I'm intending to apply for BOAT status for Telscombe Tye (RuPP Telscombe 9) TQ 389016 - TQ 403031, but I need evidence of use. Has anyone used this lane over the last 2, 3, 4, 5 or more decades? If so, could you write out a statement of use, mentioning how often you have used it and some specific dates. Also, mentioning anything memorable that happened or where you were going to would help to establish some credibility.

Clive N. Westwood
East Sussex RoW Representative,
Tel: 01892 652403 (Home), 01372 388665
(Office), Email: clive.westwood-s.com

CORNISH LANES CD

Cornwall Group has produced a CD containing listings of unmetalled lanes that are found on either the Definitive Map or the List of Streets for the County. This is available for £10 plus £1.00 p&p from *Curly Hunt, 16 Celia Heights, Bodmin, Cornwall, PL31 1EH.*
Tel: 01208 72876.

It is recognised that the status of such lanes is a continually changing environment and that since this information is in the public domain, recipients of the CD are recommended to check information if they are in any doubt. It is however somewhere to start in this rather difficult County!

The CD also contains much additional information regarding parishes, what to do if lanes aren't represented and so on.

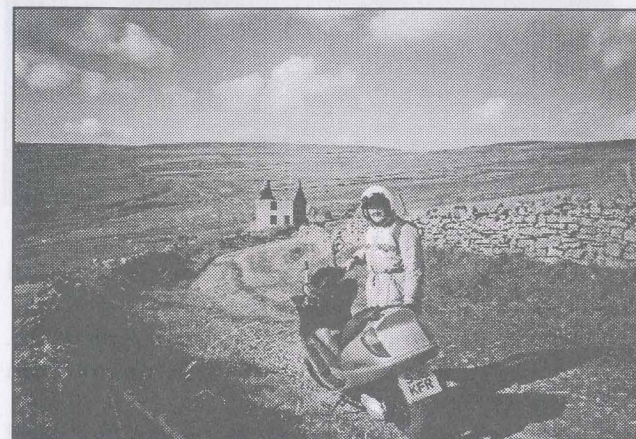
Sally Madgwick,
Cornwall Group Secretary

CUMBRIA GROUP MEMBERS

Members who cannot attend meetings can receive periodic e-mails to keep you updated. If you contact me with your email address I will put you on the mailing list.

Roger Harris, Chairman.
Email: anitaandroger@aol.com

BRIAN THOMPSON ON THE TRAIL



The front cover of this month's TRAIL shows myself whilst exploring four new Byways near Hexham in Northumberland. Within 20 miles of Hexham there is now a useful network of Byways that would be worth a day trip from further less friendly counties.

Northumberland, like Cumbria, has the admirable policy of declaring all UCRs as vehicular and putting them on the Definitive Map as Byways... and they are all nicely signposted as Byway and with double vehicular status you feel very secure. Thanks to the local TRF and Alan Kind more Byways are in the pipeline. But the council has put about 50 Byways on the map in the past decade. None have been claimed or requested by the TRF. What do I see? Scooters on green lanes. Has the TRF gone soft?

Anxious run leaders can relax. I will NOT be turning up on TRF runs on my scooter. I somehow don't think it would get very far up Walna Scar or High Way. But at 66 I appreciate some comfort; just look at that seat! I am still looking for a Kawasaki AE80 or Yamaha DT80 to tackle the more rugged trails. I still get the urge... in more ways than one!

If any other TRF member explores green lanes by scooter and feels a little left out of normal runs, get in touch. We might even form a TRF scooter section... we might even attract the fairer sex. Not a bad idea to portray a softer gentle image of two wheels sometimes. Good PR.

Brian Thompson,
North TRF Rights of Way Project Officer
(former national TRF Rights of Way Officer 1975 to 1989) and Hon. Life Member

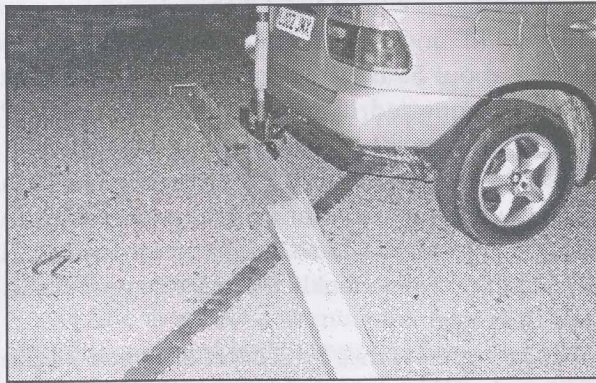
BIKE RACKS

After using my Dave Cooper bike rack very successfully for a number of years a change was called for, but not through any fault of the Dave Cooper rack.

The bracket for the Dave Cooper rack is very easy to fix behind your towball, simply requiring two longer bolts. The rack itself is in two parts which just slot in, one being adjustable to carry different wheelbase bikes. Each wheel is then lifted in and once tied down the bike is very secure.

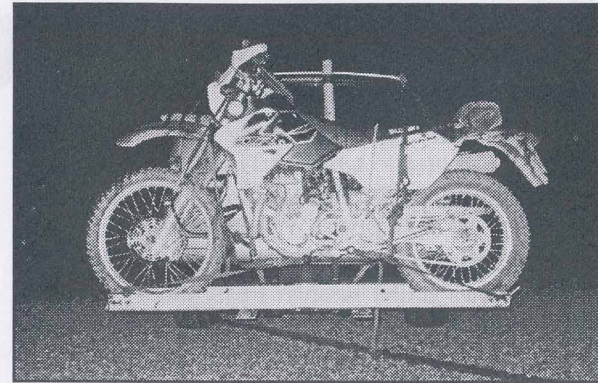
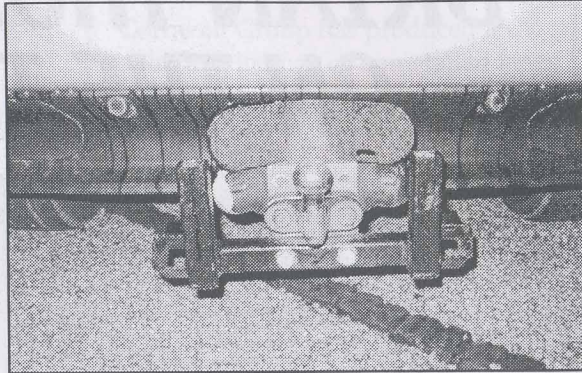
It was that lifting in and out that was becoming an increasing problem. One of two causes, either the bike was getting heavier or the date on my Birth Certificate was having a greater effect!

The solution for easy one man loading seemed to me to be to make a roll on/roll off rack. I had a length of flat steel bent into a channel wide enough for the rear tyre and just long enough for my bike. A second similar piece formed the ramp, turned over at one end to allow it to be hooked into a slot at either end of the main channel. The sides of the channel were drilled at both ends to accept stainless steel pins to stop the bike rolling off and also in the middle for the ramp to fit, upside down, between the bike wheels for transport. Square tubing brackets were then welded up to fit



into the original Dave Cooper bracket and then U bolted to the main channel. Once it was proved to work it was sent away for galvanizing.

Loading my DRZ is now easy, either pushing or driving (not riding!) up the ramp. I don't bother with the ramp for unloading. The longest job is tying the bike down securely and fitting the lighting board. Security for the bike and



the back of the car is aided by putting a padded vertical bar into a socket welded to the Dave Cooper bracket. It really works!

The DRZ 400S which I reported on way back in the year 2000, is still going strong with hardly a spanner put to it, apart from the normal routine items such as wheel bearings, brakes, chains and sprockets etc. Having in the past 33 years, since joining the TRF, owned a wide variety of two stroke and four stroke bikes, starting with a BSA B40 and much to the dismay of the East Midlands Group with who I used to ride, a BMW R80GS (because the guys behind me had to help pull it out of ruts!), I think that if I were to have a new bike it would be another DRZ 400S. Surely a recommendation!

Tony Stuart

Bid to catch the fly-tipping gangs

By **Rosalind Pasmore**

THE Environment Agency has responded to the escalating problem of fly-tipping with the launch of a new national database, FlyCapture. It will enable details of locations of incidents, types of waste, vehicles and persons involved to be shared between authorities.

Illegal dumping has increased nationally by 40 per cent over two years and two areas in the South West are particularly affected. Some authorities are reporting dealing with as many as 20,000 incidents annually and

the Environment Agency estimates that fly-tipping costs the agency, local authorities and landowners around £150 million to deal with every year.

Farmers are often at the forefront of such incidents and it is the responsibility of landowners to pay for clearing up rubbish on private land.

The Environment Agency has evidence of a growing menace of large scale tipping by organ-

ised criminal gangs. These deal in waste from demolition, construction and excavation activities as well as hazardous waste from certain industries. This activity has been encouraged by charges on the disposal of waste at licensed sites. Gangs operating fleets of lorries pose as legitimate agents and take money for disposing of waste which is then dumped illegally.

Where organised gangs are suspected, incidents should be reported to the agency's 24-hour hot-line 0800 807060.

Farmers Guardian 1st October 2004

Ed ...and Highway Authorities aren't adverse to using fly-tipping as an excuse to TRO or erect barriers to green lanes so DO USE the agency's hot line if you spot these hooligans blighting the countryside

A DAY IN THE LAKES



L to R: Young Steve, Big Simon, David (what helmet?), Happy Eric (before he started sweating).

Having heeded the advice from the Lakes Trail Advisor, David Robinson, we chose a sunny forecast and set off for Tebay. David, Simon, Steve, Eric and I prepared for a hard day's ride. Some of those lanes have stones called Launch Pads, there is no easy way round, you just have to go for it and hope you do not get it wrong.

Above 20mph is suicide, below 10mph and your momentum is too low to get up or descend those rocky lanes. Not for the faint hearted.

At 9.15 we headed for the Breast High Road. This beautiful stone road, just regraded, passes from the M6 over into Borrowdale and provides some splendid views at 1200ft. The hillsides are lined with firs planted in unusual arrays, not the usual boring rectangles and the view down Borrowdale on the descent is amazing.

On joining the A6, almost immediately on the right, is a green, green lane, hardly ever ridden, it is easily overlooked in the dash for the heart of the Lakes, but it is well

worth a look. We rejoined the A6, headed to Kendal and Gamblesmire Lane, what a beauty, round Bell Hill. Navigation was difficult with the high hedgerows (that's my excuse) so after a complete circle we decided to head straight to the Ferry across Windermere. The operators were very welcoming and the crossing afforded us a rest and saved a 20 mile ride around the lake.

Off into Grizedale Forest, great trails, stones, mud, trees and then that wonderful trail called Parkmoor, affording spectacular views over Coniston as it runs at about 600ft above and alongside the lake to High Nibthwaite. Photo call, yes! Simon asked not for the first time, when is lunch? How can you think about your stomach in the midst of all this scenery? It is easy when you are a big lad!

The next major lane was Broughton Mills to Seathwaite, really mountain scenery, the heart of the Lakes, more photos, then on to Walna Scar, the road to Coniston. What a climb; I said to Simon, "wait at the top and I'll take your photo". At the summit, no sign of Simon, Eric said "Simon had smelt the pies and descended with haste". We followed, having realised it was 2 o'clock.

Eric made it all the way off the mountain's bone shaking descent then promptly

fell off on an easy stretch,, having thought it was safe to relax. It must be said his fall was executed with style and a certain grace.

We all filled up at the service station, petrol, food and water. Simon was looking human again, the shop manager was on the phone ordering more supplies and arranging Securicore to collect Simon's contributions.

Off we went, this time heading towards Troutbeck, via Ambleside, where we did a circuit round Longmire road, Dubbs road and onto the Garburn road. The views looking down Troutbeck towards Townend were outstanding, unfortunately so were the rocks. First Steve came to a grinding halt, then Eric, then Simon. David seemed to breeze it, I hit the launch pad and nose-dived into the side, nothing broken, bones that is, a few spots of blood but nothing serious.

Thanking my lucky stars I remounted and set off to catch the others at the top of the climb. Here I was informed that my headlight plastic had been broken but the lights worked. Lucky me.

The descent, that was a different story, by the time we entered Kentmere we were all like quivering jellies, talk about bone shaking and bearing shattering, what an experience. It reminded me why I only go to the Lakes twice a year, preferring the gentler lanes of the North Yorkshire Moors and Dales.

It was 3.30 pm, in all this time we had only seen two other trail riders; three mountain bikers and six walkers. Mind you it was a Thursday.

Stile End to Sadgill next, another stoney descent, this time we saw a party of walkers, about twenty in number, so we held back and took a break until they had passed a particularly narrow section. Then we set off and exchanging a few pleasantries on passing, confirmed my opinion that not all Ramblers are instructed to harass trail riders. In fact at the next gate two old timers held the gate open for us for which we were grateful and thanked them.

By this time Eric had acquired the nickname "Eric the Coal", apologies to any Welsh readers. He was wearing a new pair of gloves, black of course. Sweating with all the effort, he was in the habit of using the gloves to wipe his face, which by this time was a picture. He looked like a refugee from the Black and White Minstrel Show (under 40's, ask your dad).

By this time we had all had enough and we decided not to go up to the gate at Gatesgarth Pass, although if you have not tried it, it is a lovely climb even though you cannot go over the final part and drop into Haweswater without a permit. So we headed back to the Breast High Road and Tebay.

The Breast High Road was the perfect trail to end a successful day, no injuries, no punctures, no breakdowns, isn't life wonderful.

Happy Trail Riding, John Robinson, North Yorkshire and Teesside Group

p.s. The Hierarchy of Lanes Notice Boards were really useful and inspired confidence to what can only be described as dodgy map readers.

GROUP NEWS

SOMERSET RUN REPORTS

Tuesday 21st August 2004

For this run five riders of mixed ability turned up at Stars Lane car park, Kevin Parfitt run leader, Gary Williams, Dave Antram, Steve Coe and myself. Rob Young reported in with a puncture and was to join us later on in the morning. The weather was ideal, bright with a few light white clouds. We started off up the back of Babylon Hill the lane which has the nice undulation mounds of soil

before coming out by the golf course. Kevin then led us through Nether Compton, across the B3148 past Ambrose Hill past another golf course onto



Poyntington and along the hill overlooking Sherborne. While admiring the view a farmer in the adjacent field stopped to point out that we should not have been there as he was told no bikes should be on "this footpath". After Kevin explained that this route had higher rights of way and that it was a legal route the farmer was quite happy to be corrected and even commented that we looked a responsible group (something to do with our average age I suspect). On our way we dropped down into Osborne before stopping at the garage at Sherborne to pick up Rob Young, a bit later than planned but time keeping is difficult when trail riding as you never know what problem you may have. From here we headed towards Dorchester (A352) taking the first right on the A3030 past the back

of Longburton through Leigh and Chetnole Ford then Batcombe Hill where part way up the hill we came to an abrupt halt as the split link on Kevin's chain broke. As always Kevin managed to find a vital replacement amongst the spare bits hoarded on his bike. With Kevin's bike repaired we were off again through two fields full of cows, where the system of going ahead and opening and shutting gates in a group rotation made it quick and easy. Just after I closed the final gate onto its latch and made sure it was secure by putting the loop of wire over the post the farmer drove up the road. At this point the rest of the group had just moved off so the farmer beckoned me over. Bracing myself for a verbal onslaught he said "thanks for shutting the gates" so I assured him that we always leave the gates as we find them. Time for a bit of lunch at Waldon Hill Garage then refuelled we headed back to Batcombe Hill via a grassy lane including a few hidden ruts good for catching riders out. Throughout the day Dave and Steve had a personal competition of seeing who could fall off the most, on this lane Steve had just notched up another point.

Near Gore Hill we had a slight delay as a result of Kevin having a slight incident. After this was sorted out we headed across the hill to Up Cerne, Minterne Parva and Dogbury Gate. At Telegraph Hill we had a bit of riding practice up then back down the very steep rocky lane. The final few lanes of the day were through Leigh then the muddy patch near Yetminster, completing a good days riding at Beer Hackett before heading back to Yeovil. And to days winner was Dave with 4 offs to Steve's 3 with no serious damage done.

Brian Bailey

Andy Baxter Motorcycles

SERVICING AND MAINTENANCE
OF ALL OFFROAD MOTORCYCLES
ENDURO AND TRAIL PREPARATION
TYRES SUPPLIED AND FITTED
ACCESSORIES AVAILABLE
(can be fitted at our premises)

*We can inspect bikes before you purchase
or fettle yours for sale*

*20 years experience of riding trails,
servicing and repairing bikes*

*Located close to 100 miles
of Wiltshire/Berkshire trails.*

Phone: 01235 767036
Mob no: 07906 941207
Email: andy.baxter1@ntlworld.com

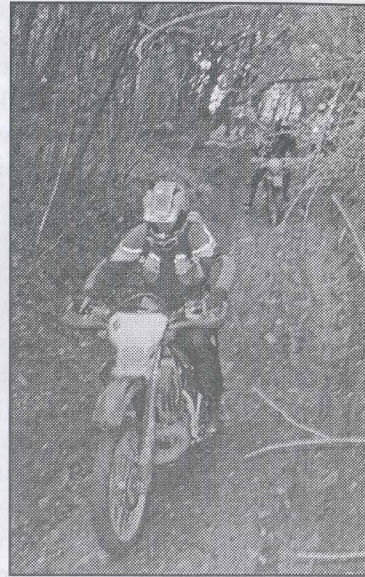
Sunday 12th September 2004

At the Thursday monthly meeting I volunteered to lead a run on the following Sunday. It was only on the short drive home did I start to realise the amount of preparation I would have to put in to provide a reasonable days ride. Preparation started on Friday by trawling over the maps that had been marked up on the Thursday meeting. I opted for a start at Podimore services.

On Thursday night I had two committed riders with others having taken my contact details. By Saturday evening the numbers had swelled to seven.

The first five, Matt Khan, Jill Ollis, Dave Antram, Rob Young and Chris Lade whom I had not met prior to Thursday. Fortunately Brian Bailey phoned to make up the full team. I had established that a couple in the group, despite being very keen, were not over experienced. I decided, therefore, to stay quite local, leaving Podimore on the A372 where we headed left towards Bineham and Bineham Farm. The lane there is overgrown with long grass concealing ruts. From there we moved on to Long Load where we cut through the houses

to find a couple of lanes that take you to Huish. Close by is a short lane that takes you to a high spot with a good view over the moors and beyond. From here we headed for Pitney where there is a short but quite steep lane and then rode along the lane behind the turf farm. At the end of this we chose to get back to the top of the Pitney lane so those that wanted could ride down and then back up again. Two of the group chose to stay at the top with the rest keenly disappearing over the top and down through the trees. Getting back up to the top proved to be a challenge. Matt made it unaided and two more struggled but got there. That left me and one other. After a couple of failed attempts it became clear the bike was too highly geared in its original road gearing, and this was making it very hot to the point that the temperature light was on. At



that point we took the easy option and went around the road and lane at Westcombe to meet up with the rest of the group.

Kingsdon Wood was next which leads out onto a lay-by on the B3151. As we had passed nobody and to avoid additional road mileage, we retraced our route and continued on to lanes at Charlton Mackrell and Keinton Mandeville.

Lunch was outside the garage at Lydford-on-Fosse. After fuel and food we retraced most of the morning's route. We had covered 143kms when we split up at Bineham Farm and went our separate ways.

I hope everyone enjoyed their day out. I will only find out in the future when I volunteer to lead if anyone wants to come.

Keith Williamson


in chains
 OFF ROAD MOTORCYCLE SPECIALISTS

tm and VOR Main Dealers

New and Used Bikes in stock
 Large stock of tm Parts
 Other makes and Models catered for
 MX Training schools

Motocross, Enduro and TRAIL

Now on line:
www.inchains.co.uk
 or
 Ring, Fax or Email for mail order

Tel: 01425 474800 Fax 01425 461962
 Email mail@inchains.co.uk
 Unit 9, Hightown Industrial Estate,
 Crow Arch Lane, Ringwood, Hants BH24 1NZ.

letters

EXPOSURE ON THE RIDGEWAY

I refer to the letter from Chris Bloomfield [September issue of "Trail"] regarding his groups recent encounter with nude male walkers on the Ridgeway and, whilst I admire his courage in being able to talk openly about it, after an experience like that, who knows, deep down, what long term mental damage may have been done. The group should now support each other in the difficult weeks that lie ahead whilst they recover from the trauma of their experience. They would be well advised to seek some psychological counselling as soon as possible.

I must say I was appalled at the horror, shock & embarrassment that must have been suffered by these poor unfortunate trail riders. To have encountered such a blatant display of antisocial behaviour must have been very distressing to the vulnerable and sensitive nature of the average trail rider. Be warned! This could happen to any one of us!

This is yet another example of the antisocial behaviour of rambles;

disturbing the peace and tranquillity of our beautiful countryside, causing offence, shock and danger of falling off laughing to other users and dragging their undergarments along the ground with complete disregard for the damage caused to the surface of the byway.

Their disgusting behaviour is typical of the Rambler's complete disregard for the health, safety and quiet enjoyment by other users of the rights of way system.

I am sure that I am not the only rider that will now call on government to ban all rambles, clothed or otherwise, and to rid, once and for all, our countryside of the disgusting, dangerous and antisocial behaviour of these louts. A spell in the army would do them good! I remain Sir,

Disgusted of Tunbridge Wells

Voyager

RACING

**DO YOU RIDE OFF-ROAD
 IN ESSEX? YES!
 THEN YOU NEED US**

We can supply most things that you require:
 Jack-up stands from £25, Acerbis enduro jackets
 from £69.99, O'neal element pants & jersey £69.99!

Open Mon-Fri 10 am to 6 pm,
 Sat 10 am to 5 pm
 CLOSE TO M11/M25

Visit our website: www.greenlaner.co.uk

Tel: 0208 - 502-0800

66 Borders Lane, Loughton, Essex IG10 3QX

P.S. WE DO ROAD STUFF AS WELL!

FABER MAUNSELL STUDY

Following Richard Collins' suggestion in the August edition of TRAIL that we should write concerning the Faber Maunsell Study possible cover up, I put a flyer in my magazine to that effect and also wrote to my M.P. John Burnett, on August 22nd, Defra on September 3rd and Alun Michael on September 8th to date all I have received in return is an acknowledgement of my letter from J. Burnett. Has anyone in the TRF fared any better?

On September 12th a new member joined our group. Whilst chatting on Exmoor, he mentioned that he was a solicitor! This could be useful as, should anyone query our right of passage, I could always say "would you care to have a word with our solicitor, Mr L..., of Messrs... he's on that Honda" (some years ago we had a member of Barnstaple CID riding with us!)

On further legal matters I am wondering if the new "Right to Roam" is specifically only for walkers. If not, then the door would be wide open for our handlebars.

*Safe riding, John Chilcott,
the oldest swinger in the West!*

Byway and Bridleway

Journal of the Byways & Bridleways Trust

All you ever wanted to know about byway and bridleway related issues, be it claiming, closing or diverting, all presented in a readable format and delivered to your door ten times a year.

Subscribe now and stay up to date with the implementation of the Countryside and Rights of Way Act 2000.

**PO Box 117
Newcastle upon Tyne
NE3 SYT
Tel: 0191 2364086**

**editor@bbtrust.org.uk
www.bbtrust.org.uk**

ADVERTISING RATES

BLACK & WHITE

1/4 Page £28

1/2 Page £55

Full Page £100

COLOUR

1/4 Page £65

1/2 Page £120

Full Page £225

INTERESTED IN ADVERTISING?

Contact Branca on 07812 897695 or 01772 720237
trailadvertising@hotmail.com

CLASSIFIED

BRENDAN CHASE B&B Lake Windermere from £17.50 each x 4 sharing. Bike lock-up, parking, all rooms c/h, CTV, H & C, pub and grub handy, CCTV surveillance. Tel: 015394 45638.

PROFESSIONAL WHEEL BUILDER Wheels trued, rebuilt, rims Powder Coated or Anodised. New rims, wheels polished, new bearings etc. Rejuvenate your old wheels. Email excelsior.ps@ntlworld.com or call Nick on 07968 784421.

HONDA XLR250R 1994, MOT'd, red/white/blue. Vgc. Sensible mods. Quiet reliable laner. Spare road tyres. £1150 ono. Tel: 01342 314270 anytime.

YAMAHA SERROW L Reg, excellent original condition, elec. start. MOT & Tax. Little use by lady rider. £1475. Tel: 01495 272451 (South Wales).

SUZUKI DR350S 1992, blue/white. Excellent condition. Many new parts including: full body kit, tyres, chain & sprockets, F&R wheelbearings, wide pegs, CRD frame protectors etc. Tax & tested. £1375. Tel: 01832 293431 (Cambs, evenings).

SUZUKI DR-Z400E K1(2000), T&T, fully road legal, green lane use only, stainless output shaft spacer, new cam chain & plastics, bashplate, br. guards, fr. guards, Renthals, graphics, FMF 'Q' pipe, regular oil changes, lovingly maintained. Many spares, filters, paddock stands. £2350. Tel: 07967 397528.

DRZ400E 2002 52 plate, crd exhaust, Renthal bars, Acerbis guards, CRD bashplate, bar risers, vgc. £2600 ono.

Tel: 0115 956 9767 or 07814 605449.

SUZUKI GN125 R reg, 9k miles. v. good cond. mot & sorn. New tyres. Lady owner. Garaged. £950 ono. Tel: 01707 394715 (Herts.).

HONDA XR250R 2002/02, 4,600km, green lane use, vgc, new tyres, Renthals, Acerbis bash plate and toolkit, hand guards, taxed May 05. £2675 ono. Tel: John 01372 458070 (Surrey), Mobile: 07702 241718.

XR250Y 2000 V Reg, 7500kms, excellent condition. Bike used mainly for commuting with some green lane use, new sprockets and chain. MOT till December, taxed to April. £1900. Tel: 07957 456183 (Surrey).

KTM250 EXC 4-stroke with 305cc upgrade kit - see recent TBM. Great bike. Unfortunately knee operation forces sale. £3250 ono. Tel: Andy 01403 255799 (West Sussex).

CRM250MK2 '91 18k T&T. Exc. mech. cond., rimlocks, new pads & rear bearings. Various spares. £1400 ono. Tel: 01733 468803/07973 781325.

YAMAHA WR250F 2001/01 Green lane use only. Well maintained. Taxed. All new plastic. Vgc. Good tyres. £2950 ovno. Tel: 01246 235324/07769 504216.

KAWASAKI Z550 F reg with touring panniers. Yes its old but its good throughout. Only £695. Contact Gordon 01524 427919 or 07811 962466.

KAWASAKI KX60 Good condition. £650 plus helmets, boots, body armour, clothing etc. (hardly used) sold separately. Tel: 01993 882760

(Oxon).

KTM 400 EXC 2001-51 plate. Electric & kick start. New MOT, new enduro tyres, new chain & sprockets. Superb condition. £2995. Tel: 01787 313580 (Sudbury, Suffolk).

HUSABERG FE450E 2004 Model enduro/trail bike. Fully road legal, electric start, sump guard, trail use only. Excellent original condition. £3900. Tel: 01229 587834.

BMW R100GS (1992) V.g.c. BMW panniers, braided hose, Y-piece, service history. Well cared for machine. £2300 ono. Tel: 01782 848034.

SUZUKI 350 ENDURO 1999, air cooled, converted to street legal with full MOT. New Metzler enduro 3s. CRD exhaust, Acerbis extras, too much to list. Immaculate. Offers IRO £2000. Norwich area. Can email picture. Tel: Jon 01603 759508.

SUZUKI DJEBEL 200cc 1999 Trail bike. T&T. Well maintained, mature rider £1450. Tel: 01524 791473 (Lancs.).

YAMAHA XT225 Serrow 1991. Tax, MOT June 05. V.g.c. £1000 for quick sale. Tel: 01962 717630 (Winchester).

HONDA XR600 1994 Renthal bars, hand guards, sump plate, will MOT for a year if required. Genuine reason for sale £1300. Tel: 01476 561400 (Lincs.).

DRZ400E '02 reg. Exc. condition. Green lane only. Well maintained, regular oil changes. New chain & sprockets. £2599. Tel: 01254 823893 or 07821 164972.

MEMBERS CLASSIFIED ADS ARE FREE. If you must write an essay a contribution to the 'fighting fund' would be appreciated (enclose a fiver!)

GROUPS

AXE VALE Malcolm Preece, Tel: 01275 844757
2nd Mon, 8pm, The Star PH at Star on A38.

BLACK COUNTRY Nick Hammond, Tel: 01902 700749
1 & 3 Tues, 9pm, The Mitre, Church Road, Bradmore, Wolverhampton.

BRISTOL Richard Stiling, Tel: 07974 151439
4th Mon, 8pm, The Tennis Court Inn, Deanery Road, Warmley, Bristol.

CAMBRIDGE John Brooker, Tel: 01767 692805
1st Thurs, Golden Ball, Boxworth.

CORNWALL Sally Madgwick, Tel: 01208 74411
3rd Thurs, 8pm, Pencaron Club, Bodmin.

CUMBRIA Anthony Hayhurst, Tel: 01539 721115
2nd Tues, The Gilpin Bridge Inn, Levens, Nr. Kendal.

DERBYSHIRE & SOUTH YORKSHIRE
Kevin Marsh, Tel: 01246 811949
2 & 4 Tuesdays, The Angel Hotel, Sprinkhill, Eckington, Nr. Chesterfield, Derbyshire.

DEVON Rob Williams, Tel: 01626 364564
2nd Tues, 8pm, The Welcome Stranger, Bickington, Nr. Newton Abbott.

DORSET Martin Diamond, Tel: 01202 571325
1st Tues, 8pm, Greyhound Inn, Winterbourne, Kingston, Nr. Bere Regis.

EAST MIDLANDS Graham Chinnery, Tel: 01332 863433
2nd Wed, The Chequers Inn, Main St, Breaston, South Derbyshire, J25 on M1.

EAST YORKSHIRE Peter Hall, Tel: 01405 862616
1st Tues, The Plough, Snaith.

ESSEX Dave Anderson, Tel: 01277 657783
2nd Wed, The Wheatsheaf Public House, Hatfield Peveral.
4th Wed, The White Hart Public House, High Street, Billericay (social meeting).

EXMOOR Ian Sadler, Tel: 01884 821547
2nd Wed, 8pm, The Hartnoll Hotel, Bolham, A396 1 mile north of Tiverton.

GLOUCESTER Geoff Wilkie, Tel: 01453 811412
1st Wed, 8pm, Wagonworks Club, Tuffley Ave., Gloucester.

HERTFORDSHIRE Dave West, Tel: 07768 402424
2nd Thurs, 8pm, The Old Guinea, Ridge, Near Potters Bar.

HIGH PEAK & POTTERIES
Graham Till, Tel: 01782 776338 or 01782 833222 (work)
1st Tues, 8.30pm, The New Inn, Leek Road, Longsdon. (A52, 1.5 miles West of Leek).

ISLE OF WIGHT Andy Hawkins, Tel: 01983 617232
1st Wed, 8pm, The Eight Bells Inn, Carisbrooke, Newport, IOW.

KENT Anthony Evans, Tel: 01732 360884
2nd Wed, 9pm, Pied Bull, Farningham, Off A20, Nr Brands Hatch

LANCASHIRE Keith Westley, Tel: 01704 893215
1st Tues, Black Bull, Hall Lane, Marwadesley.

LINCOLNSHIRE Paul Vernon, Tel: 01522 889079
4th Thurs, 8pm, Manvers Arms, Monks Road, Lincoln.

LODDON VALE David Cook, Tel: 0118 901 4481
2nd Thurs, Inn in the Park, Woodley Centre, E. Reading.

MID WALES Stephen Hall, Tel: 01982 570295
Last Thurs, 7.30pm, The Crown Inn, Rhayader.

NORTHUMBERLAND Chris Moody
Tel: 0191 387 3507 6-10pm or 07860 302001 (mobile)
1st Tues, 8pm, North Durham Motorclub, Annfield Plain, Nr Stanley.

NORTH WALES Richard Hughes, Tel: 01244 533855
1st Wed, 8pm, Cross Keys, Buckley, OS 117 290 637.

NORWICH John Jenkins, Tel: 07721 880463.
2nd Wed, 7.30pm, White Horse, Trowse, Norwich.

OXFORDSHIRE Peter Cole, Tel: 01844 214075
3rd Thurs, 8.00pm, Royal British Legion Club, Rutten Lane, Yarnton.

PEAK DISTRICT Neil Walker, Tel: 01788 811919
1st Thurs, 8pm, Travellers Rest, Ashbourne Road, Derby.

RIBBLE VALLEY Mark Wolstenholme, Tel: 01282 432088
2nd Tues, Pendle Hotel, Chatburn, Clitheroe (off A59).

SOMERSET Greg Hughes, Tel: 07887 821472
2nd Thurs, 8pm, The Bell Hotel, Curry Rivel, Nr. Taunton.

SOUTHERN Lee Wildsmith, Tel: 02380 611110
3rd Thurs, Southampton & District MCC, Woodside Ave., Eastleigh, (opposite Halfords).

SOUTH LONDON & SURREY
Steve Sharp, 0208 773 4204
9pm 1st Wed, Carshalton United Ex Service Club, West Street, Carshalton, Surrey.

SOUTH NORTHANTS
Graham Walker, Tel: 07796 308123
2nd Mon, 9pm, The Live & Let Live Pub, Harpole, Nr. Northampton..

SOUTH WALES Stuart Dodwell, Tel: 01446 710851
1st Thurs, Welsh Institute of Sport, Cardiff, 8pm.

SUFFOLK Richard May, Tel: 01787 374073
Last Wed, Manger Pub, A134 Sudbury Rd, Bury-St-Ed.

SWINDON Phil Male, Tel: 01793 731777
1st Wed, 8.30pm, The Carrier's Arms at South Marston, Swindon.

SUSSEX Nick Harris, Tel: 01798 344594
Last Thurs, Ashington Social Club, Rear of Red Lion, A24, 9 miles North of Worthing.

TEESSIDE & NORTH YORKS
Roger Preston, Tel: 01429 837093
3rd Tues, The Ranch House, Thoraldby Farm, Nr Stokesley, map ref 93...493074.

THAMES VALLEY Gary Hiller, Tel: 01932 851291
3rd Mon, District Arms, Woodthorpe Rd, Ashford, Middlesex.

WEST ANGLIA David Knight, Tel: 01933 313816
1st & 3rd Thurs, Scott Bader Social Club, opp. Parish Church, Wollaston, Wellingborough.

WEST MIDLANDS Simon Mills, Tel: 01926 332982
1st & 3rd Thurs, Wilmslow Mens Club, Stratford on Avon.

WEST YORKSHIRE Gordon Carr, Tel: 01729 830569
1st & 3rd Thurs, Bankfoot Cricket Club, Wickets Close, (off Cleckheaton Rd), Odsal, Bradford.

WILTSHIRE Vic Price, Tel: 01380 724651
1st Tues, The Bell On The Common, Broughton Gifford.

WORCESTERSHIRE
Dave Gunster, Tel: 01527 456095 Mob: 07960 422523
1st and 3rd Tuesday, White Hart, Fernhill Heath, Worcs.